

# How to compatible with ZLG **CANPro** Protocol Analysis Software

**(Only applicable to CANalyst-II analyzer)**

Instruction Version: V2.03

Version Update Date: 2017.06.30

Firstly, thank you for your purchase and use our company's products, we will serve you best!

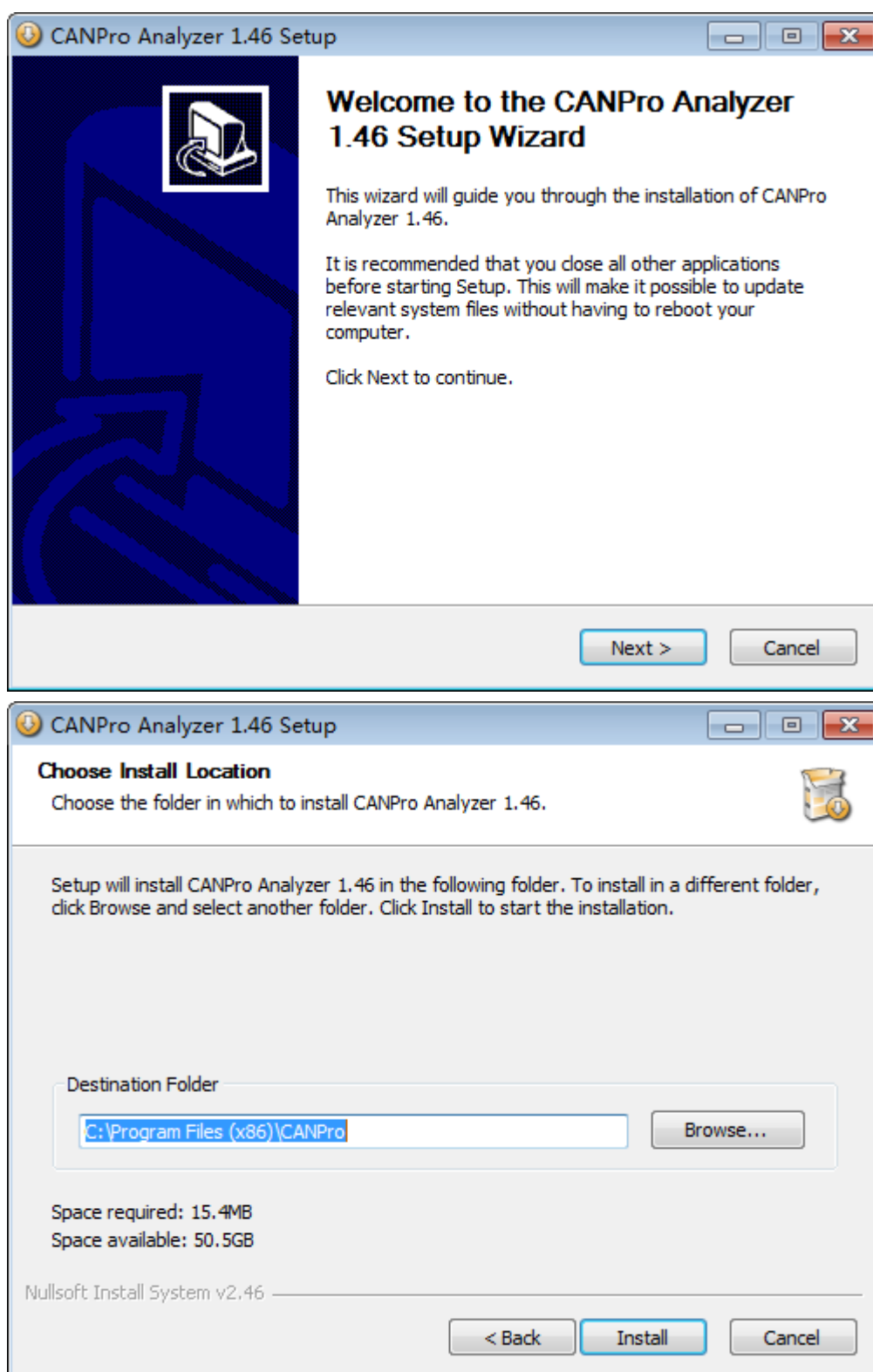
The purpose of this document is to guide our clients for the first time buying and using **CANalyst-II analyzer** to compatible with PC software of ZLG **CANalyst-II analyzer**, namely ZLG **CANPro Protocol Analysis** Software.

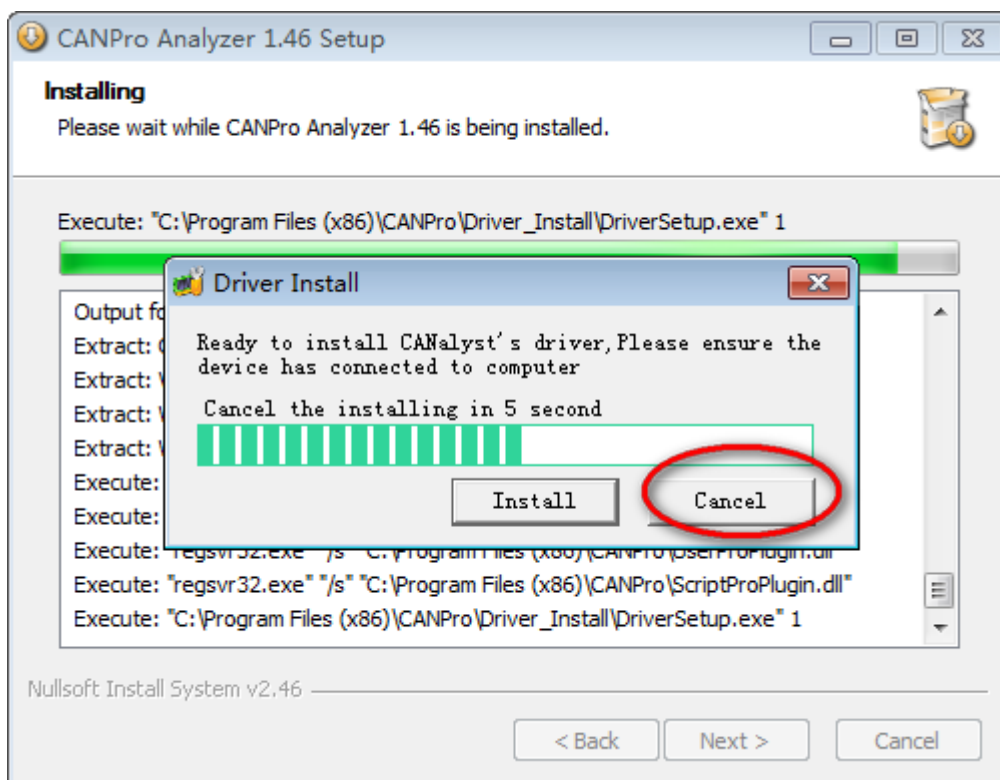
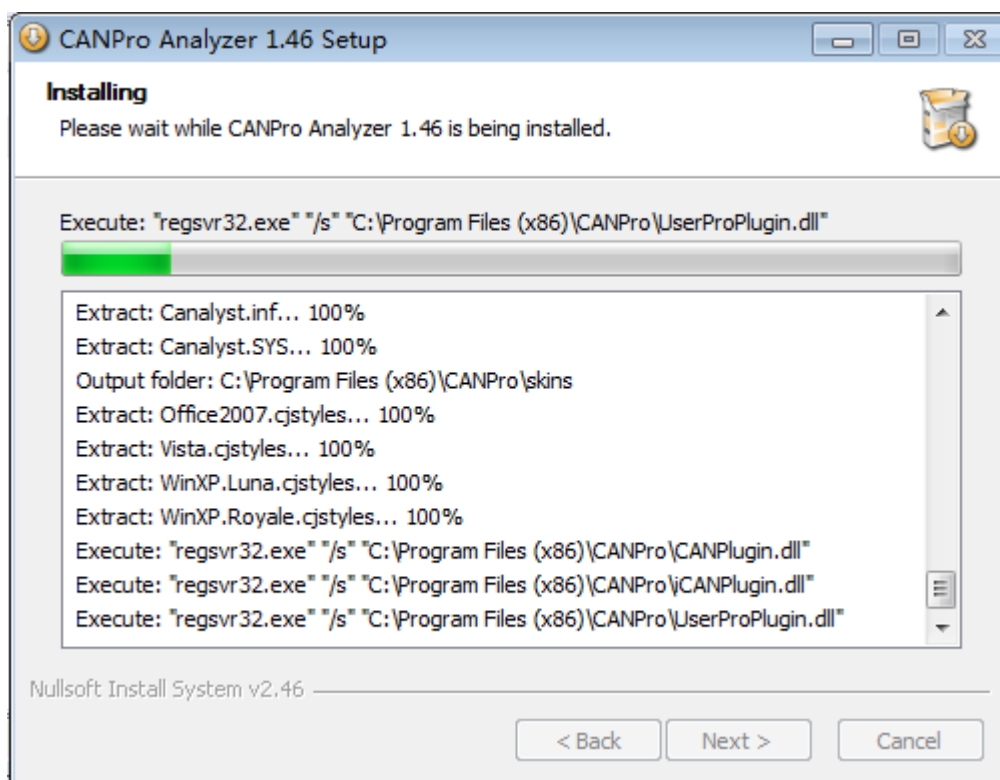
## Part One How to Compatible with ZLG CANPro Software

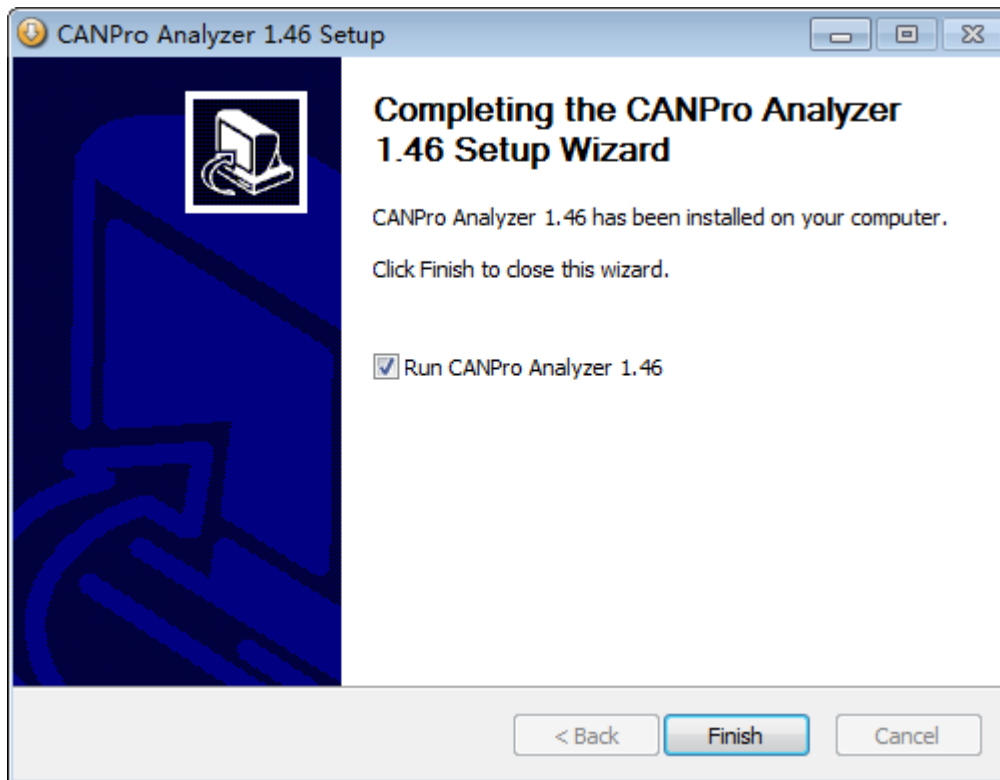
### 1、 “CD\How to use English software\CANpro”

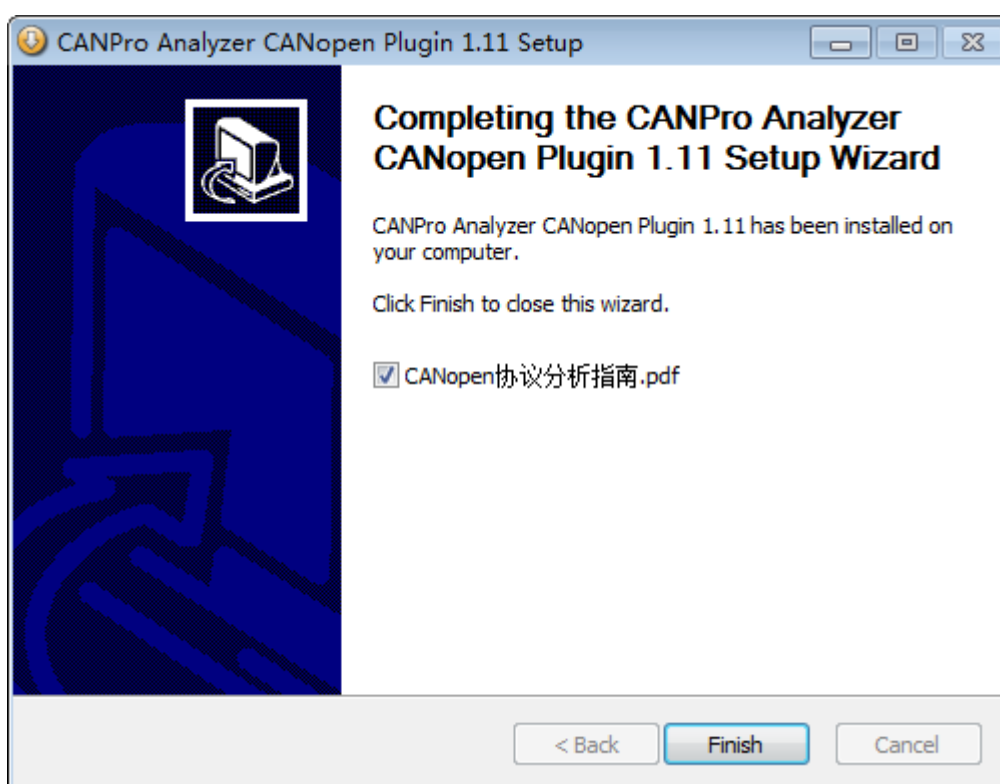
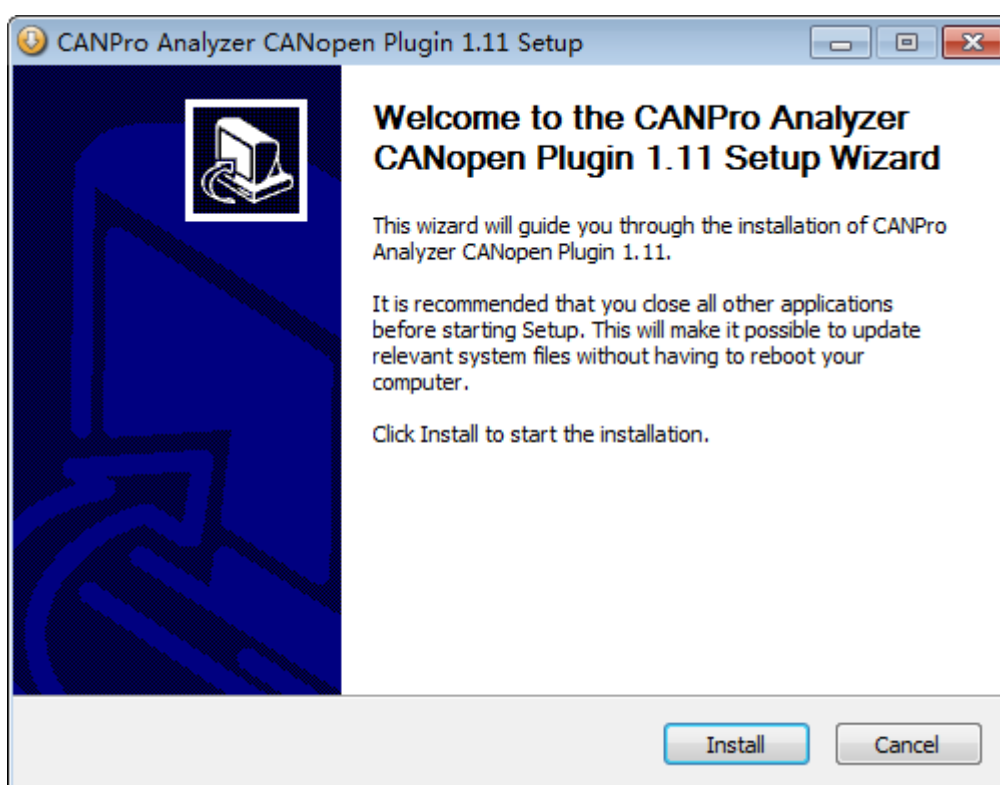
Install **CANPro** main program first, and then install three protocol analysis plug-in installation packages.

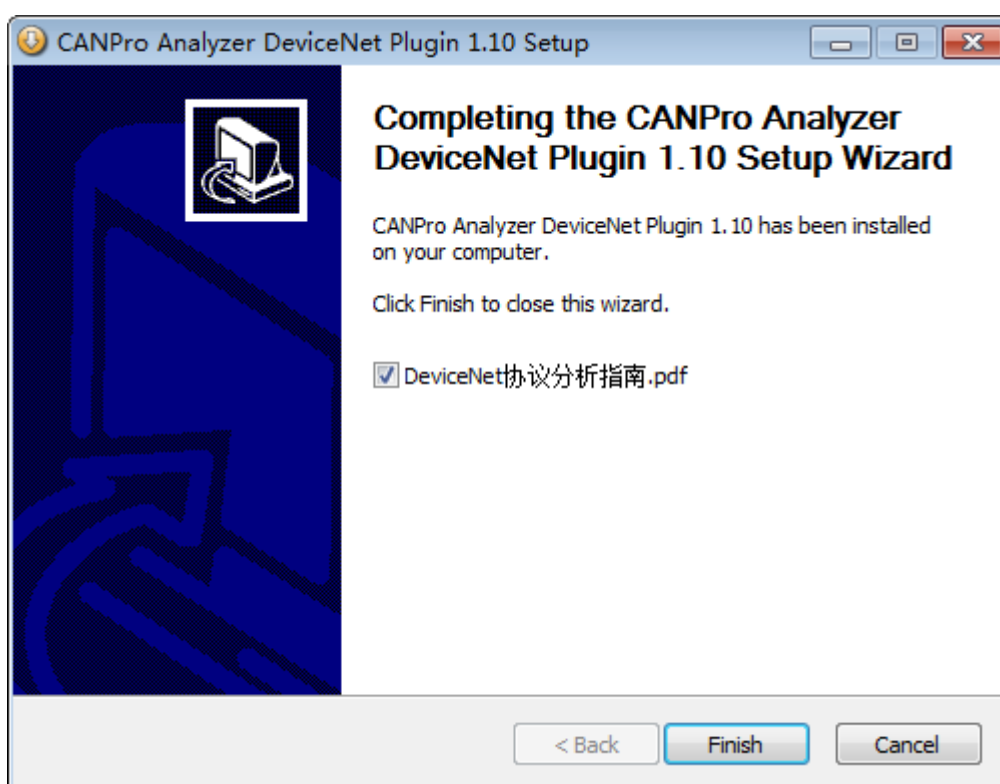
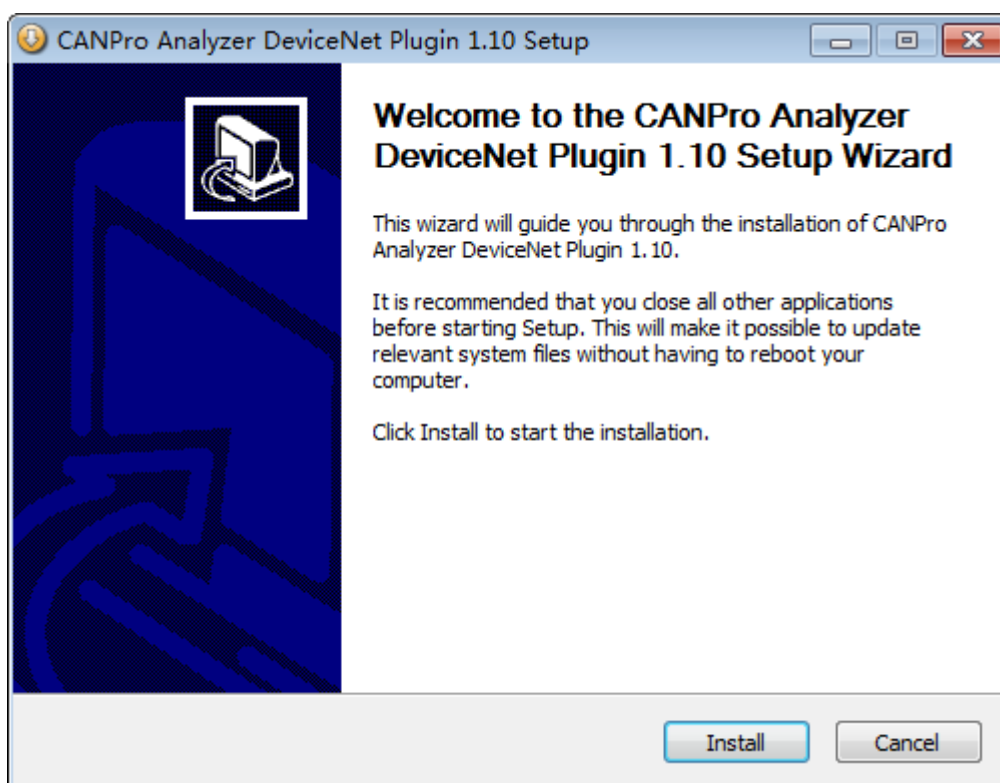


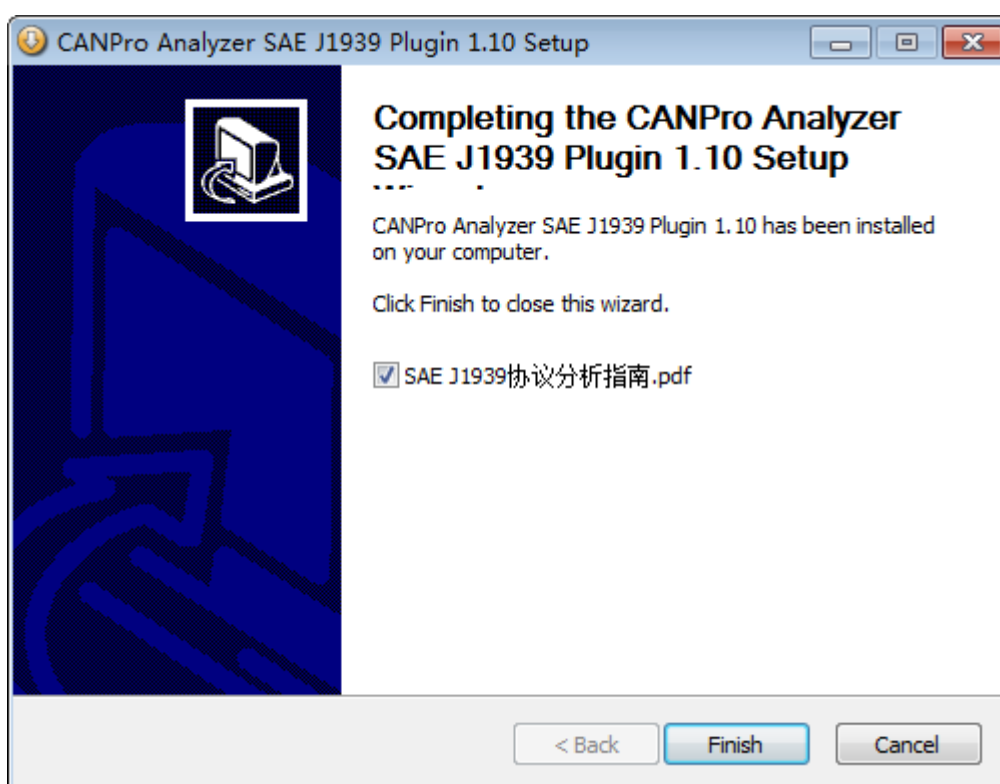
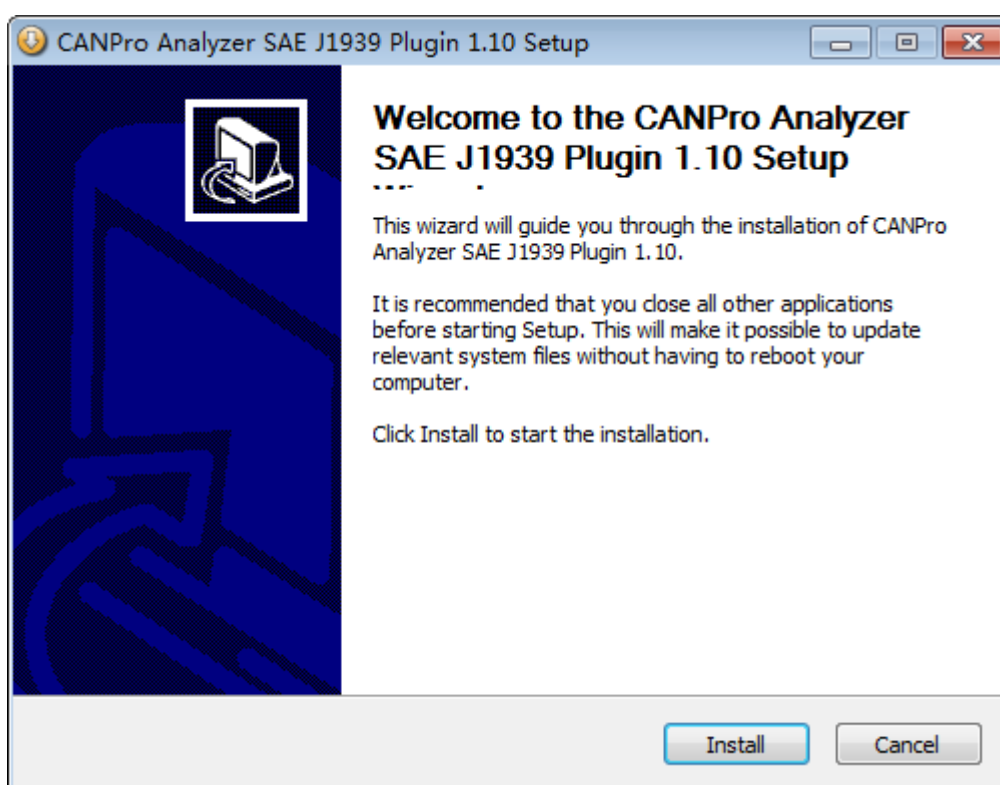






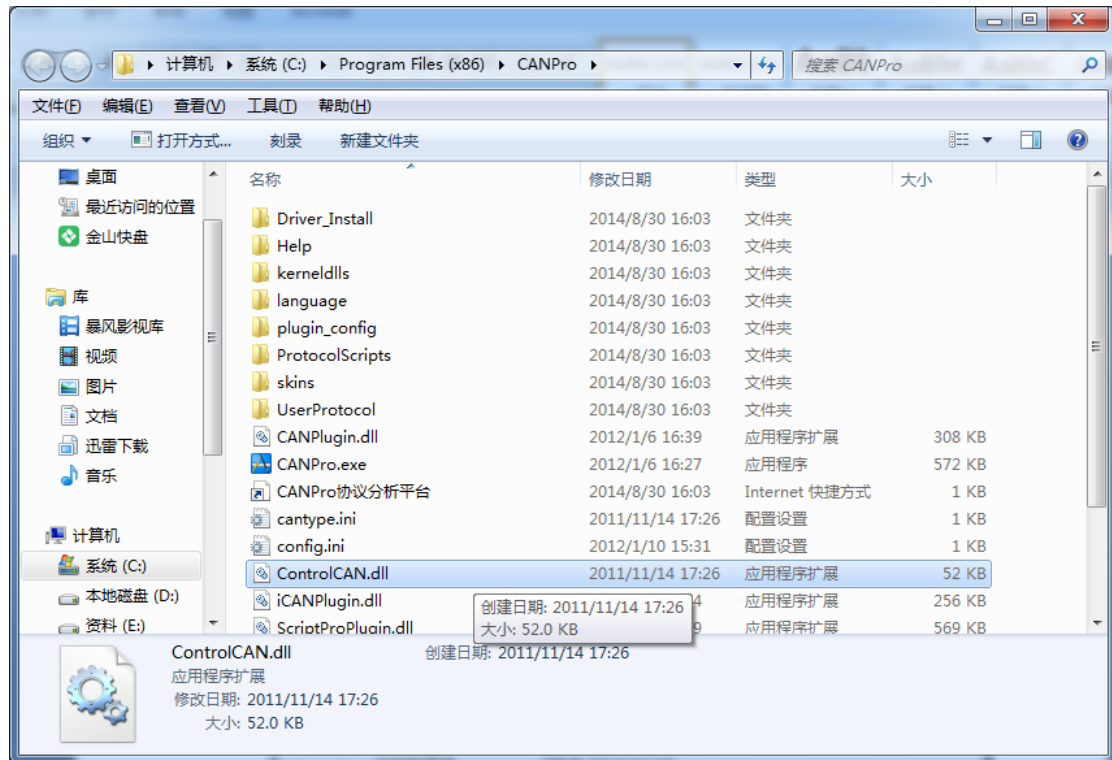






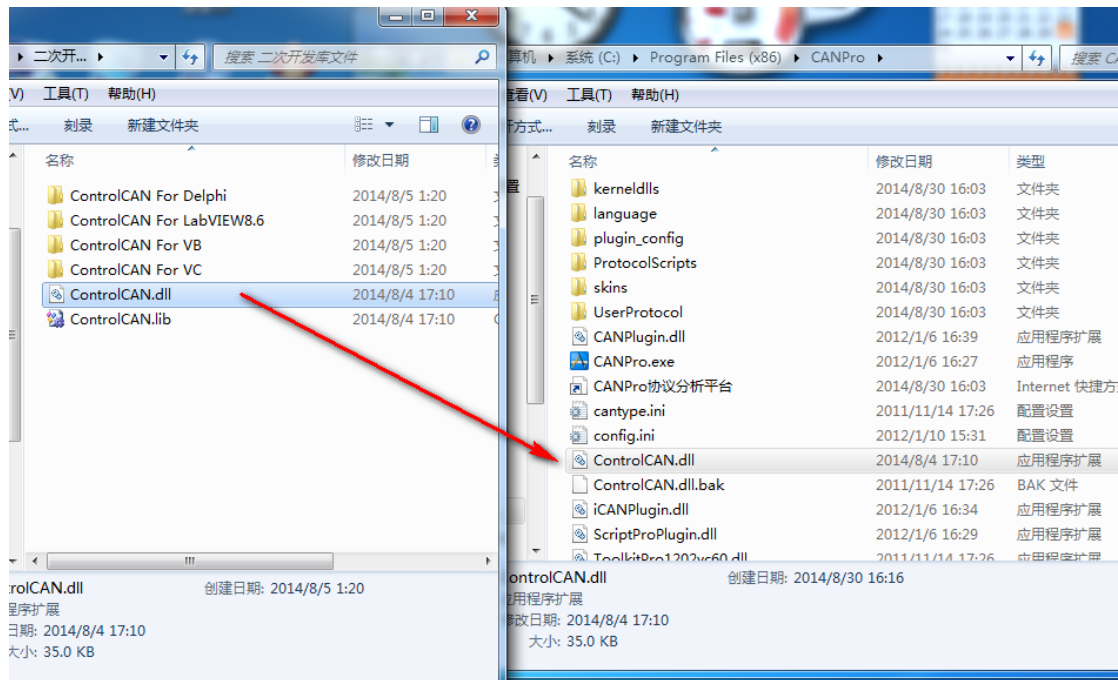


2、change the name of the file in **CANPro** installation directory from "**ControlCAN.dll**" to "**ControlCAN.dll.bak**", as a backup.



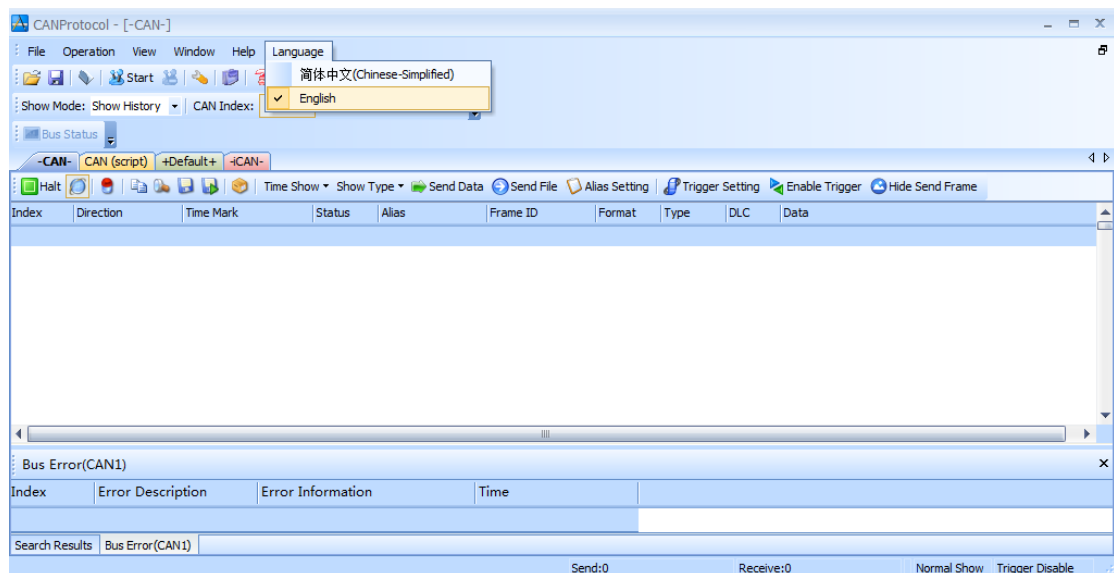
Dll file information of zlg

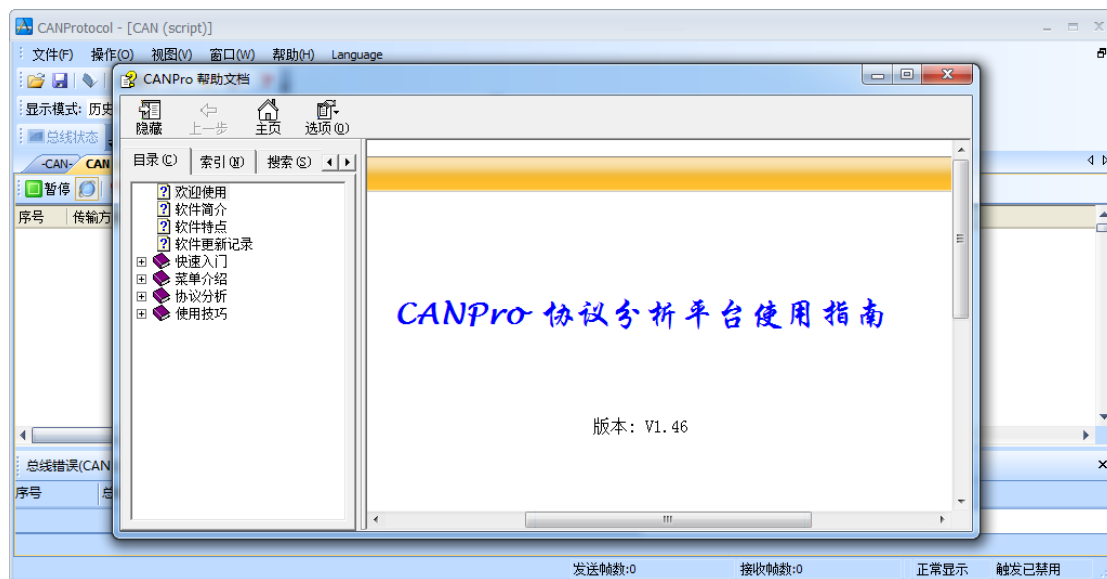
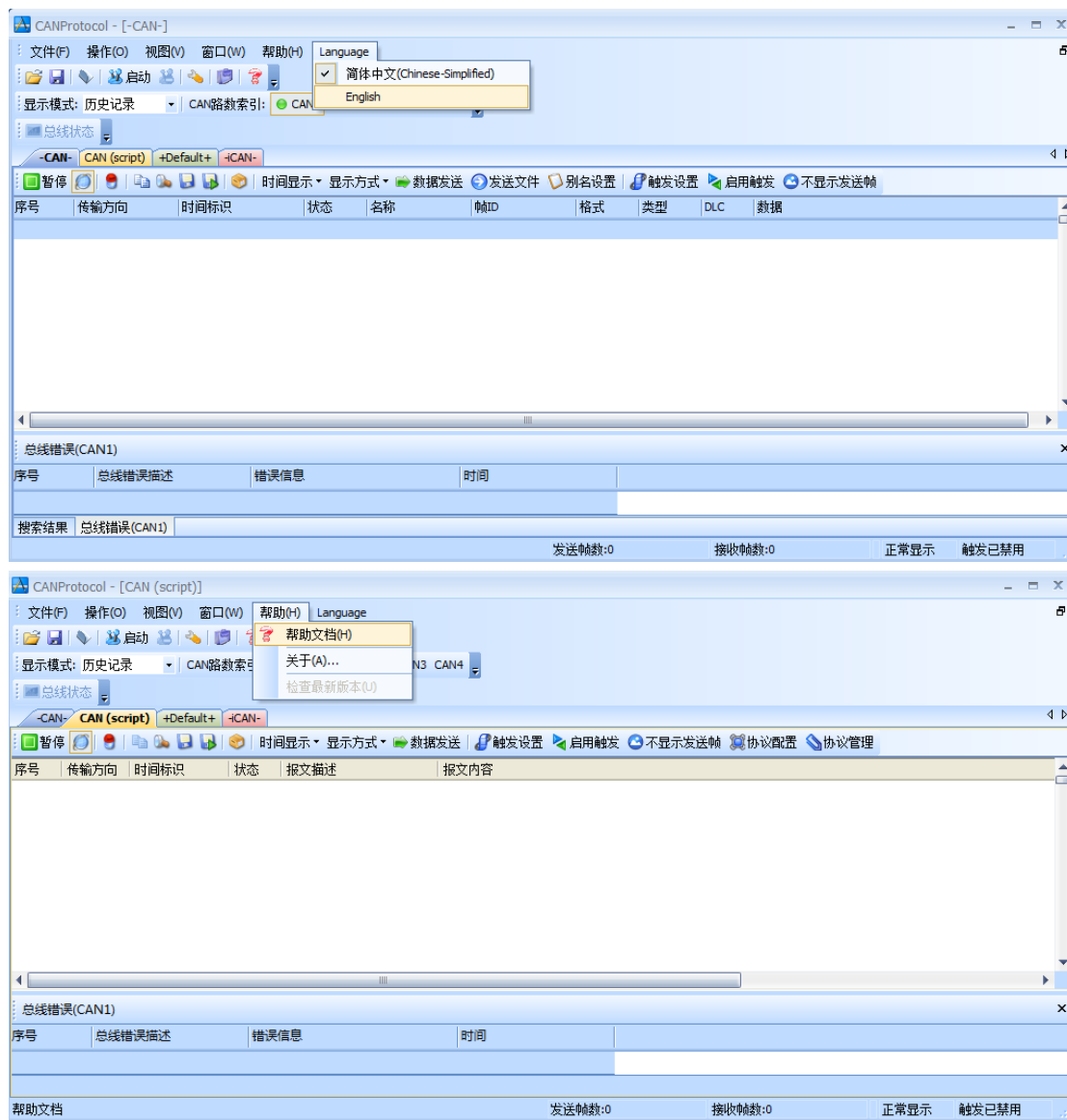
3、copy "**ControlCAN.dll**" file which you can find it in the **[secondary development library]** file folder in The CD-ROM directory provided by our company, to **CANPro** installation directory.



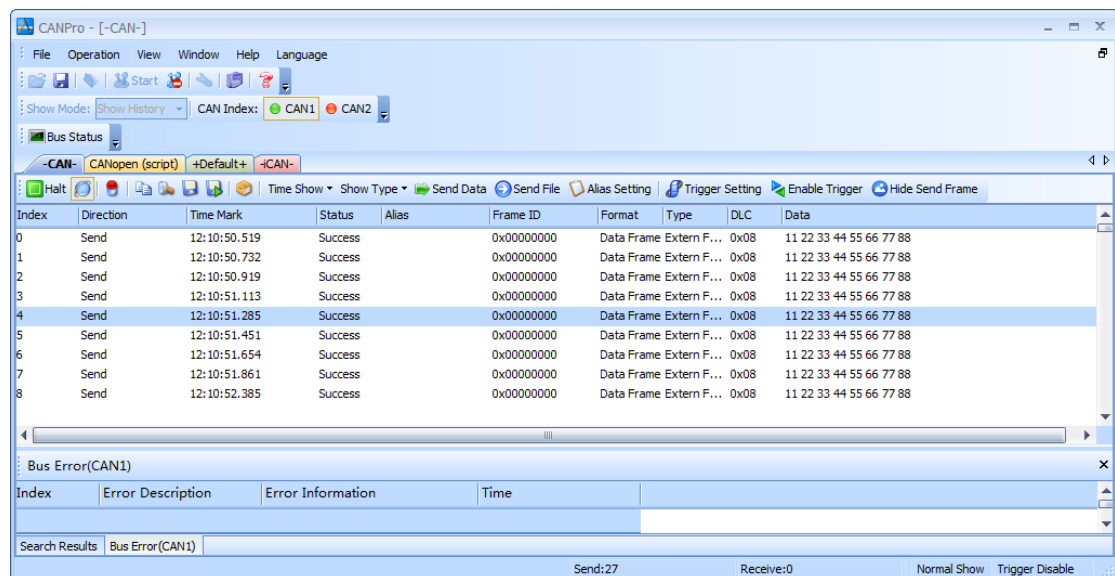
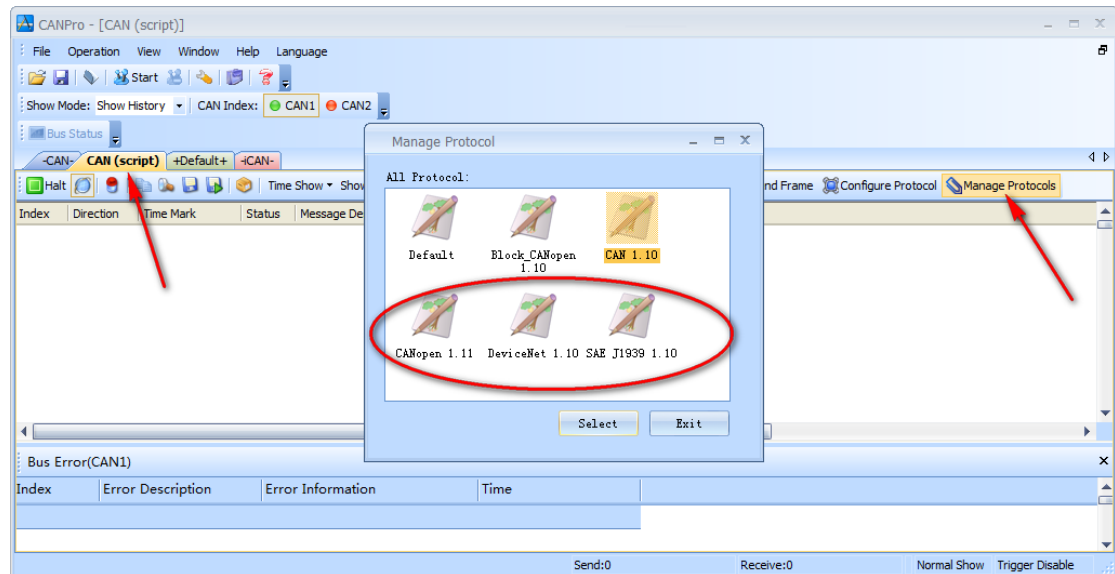
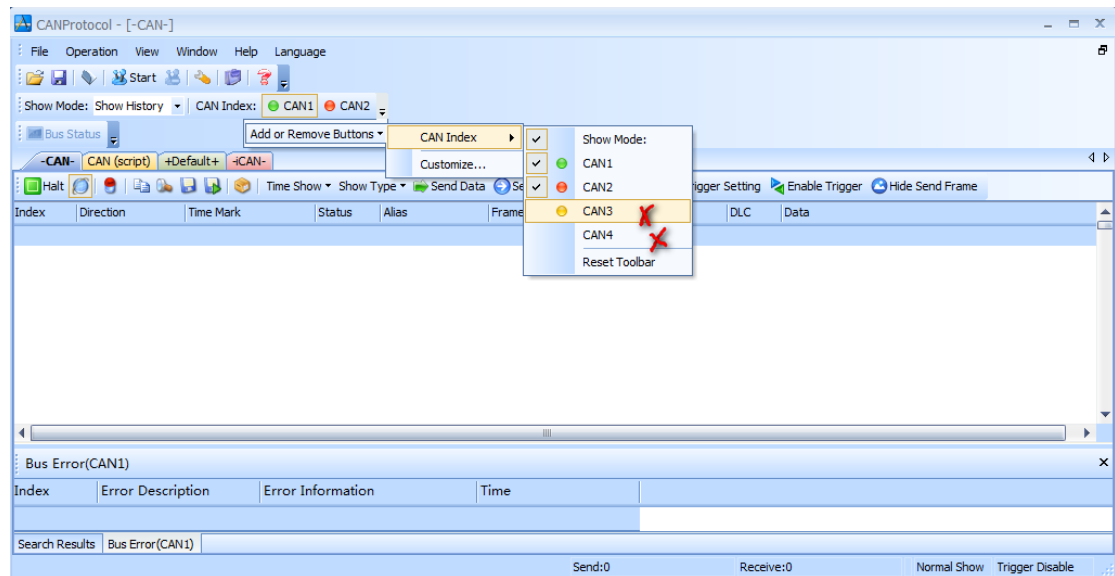
At this point, you have completed the software installation process.

4、Open and run **CANPro.exe**, after the correct installation of **CANalyst-II analyzer** driver of our company, operation can be performed by **CANPro** software.





### 3. How to compatible with ZLG CANPro Protocol Analysis Software



5、If you need back to use ZLG **CANalyst-II analyzer**, you can change the backup file "**ControlCAN.dll.bak**" to "**ControlCAN.dll**" and cover to replace the existing file with the same name.

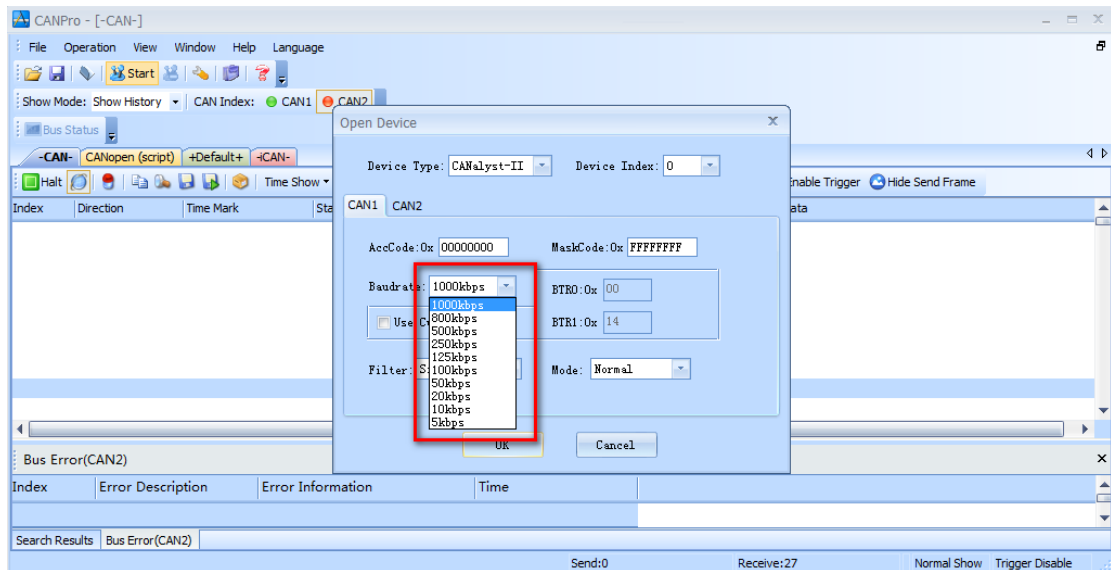
## **Part Two Functions Not Compatible With ZLG **CANPro** Software Temporary**

As different CAN controllers are used (by the way, our company use high performance 32 bit microprocessor, focus on product performance and speed, Use our USB\_CAN TOOL software can play the best performance of the equipment), when you use ZLG **CANPro** software to operate our **CANalyst-II analyzer**, there may be a few functions which can hardly be used cannot compatible with ZLG **CANPro** software temporary, but will not affect the use of normal functions. In order to solve the problem above, our company is working on it very hard; we believe it will become fully compatible through remote upgrade library file in the near future. You can use it if you are accustomed to ZLG **CANPro** software. When use ZLG **CANPro** software to operate our **CANalyst-II analyzer**, Compatible part includes: **Baud rate setting**, **Filter settings (partially compatible)**, **Standard Frame \Extern Frame \ Remote Frame \ Data Frame** transmission and reception and so on.

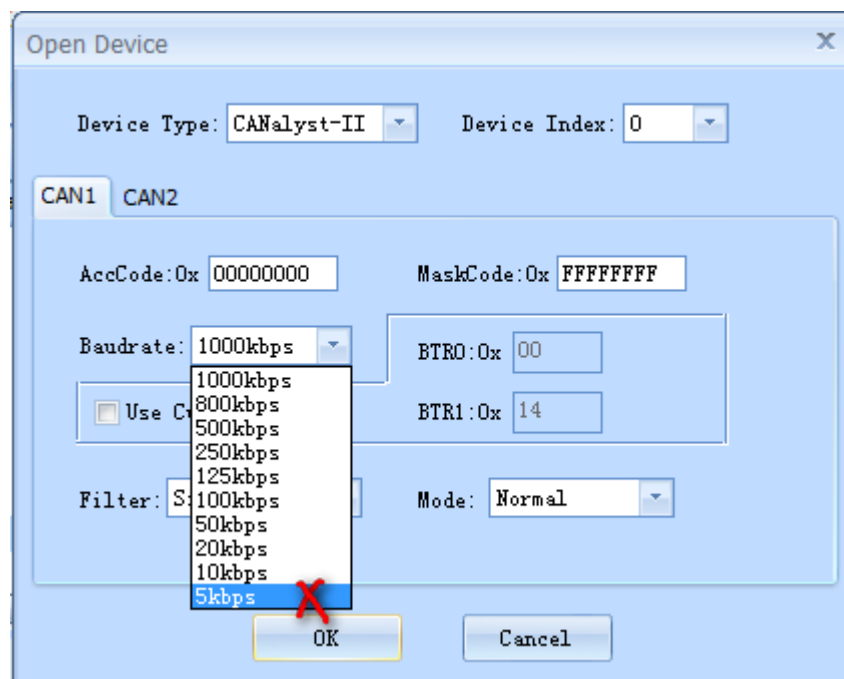
Those temporary incompatible functions include:

**1、when start the software, "**Start system**" dialog box, select the baud rate (The baud rate under 10kbps does not support)**

when start up ZLG **CANPro** software, "**Start system**" dialog box filled in initial parameters will pop up ,which has a drop-down list of baud rate, including 10 kinds of common baud rate ranging from 5kbps to 1000kbps and others, As shown in the figure below:



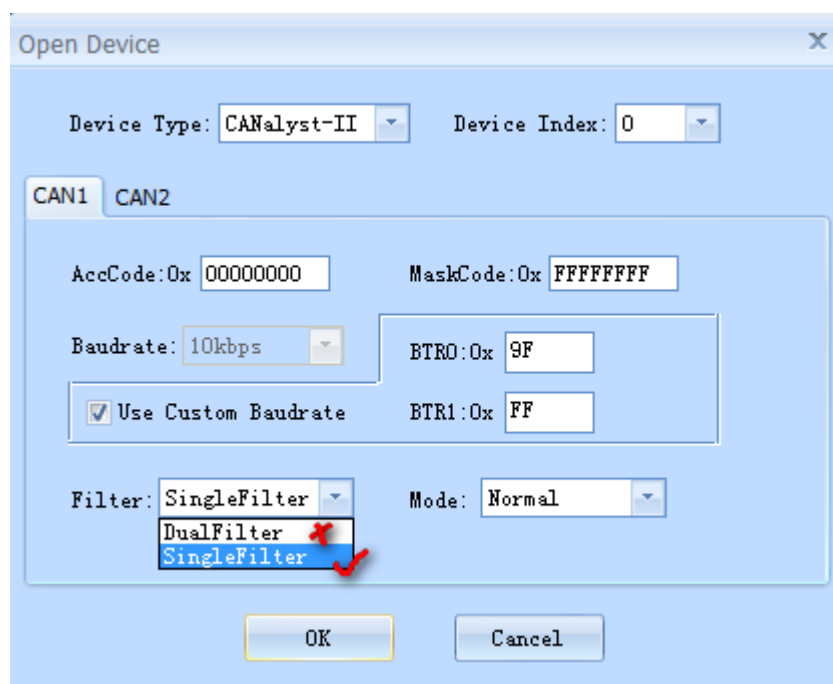
Our **CANalyst-II analyzer** does not support the baud rate under 10kbps, so the list 5kbps baud rate parameter is invalid:



## 2、Filter Settings

ZLG **CANPro** software offers more detailed and comprehensive **Filter Settings**.

As to the **Filter Settings** in **CANPro** software, our **CANalyst-II analyzer** only supports **SingleFilter** mode, please don't select **DualFilter** model during using process.



Note: if you carry on secondary development based on our **CANalyst-II analyzer**, for the use of the interface function as well as the compatibility of ZLG function library, please refer to < USB-CAN Bus Interface Adapter & CANalyst-II Analyzer Manual.pdf >