

How to compatible with ZLG CANTest software

Instruction Version: V2.02

Version Update Date: 2017.03.01

Firstly, thank you for your purchase and use our company's products, we will serve you best!

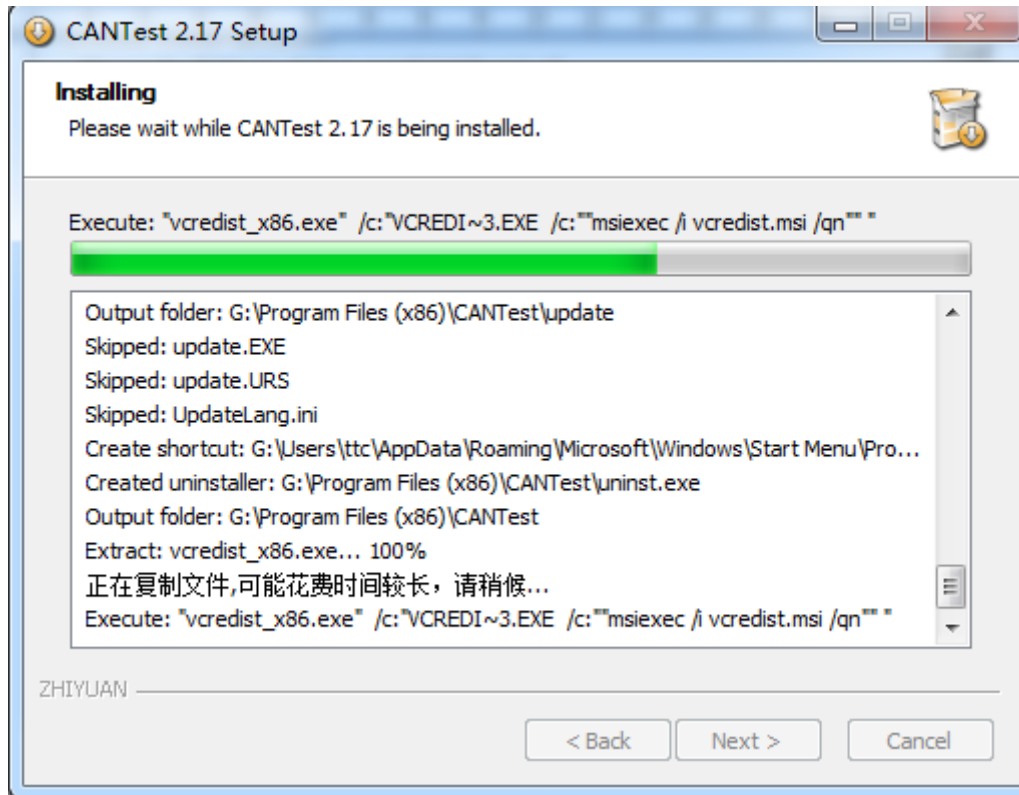
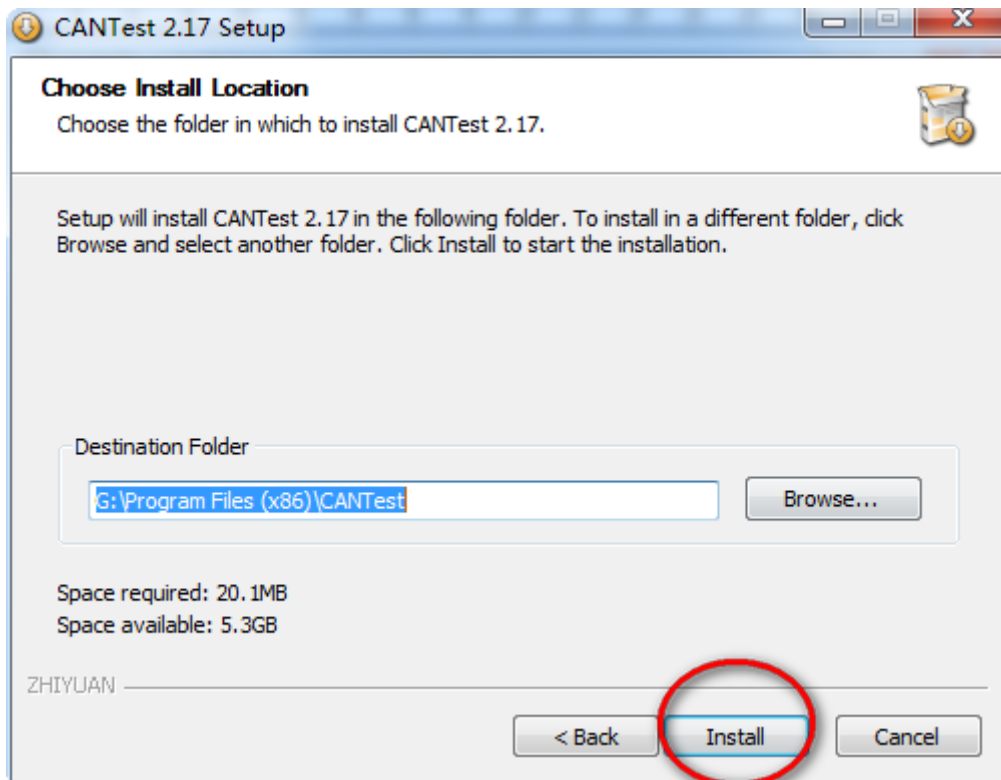
The purpose of this document is to guide our clients for the first time buying and using **USB-CAN adapter\CANalyst-II analyzer** to compatible with PC software of **ZLG USB-CAN adapter**, namely **CANTest**.

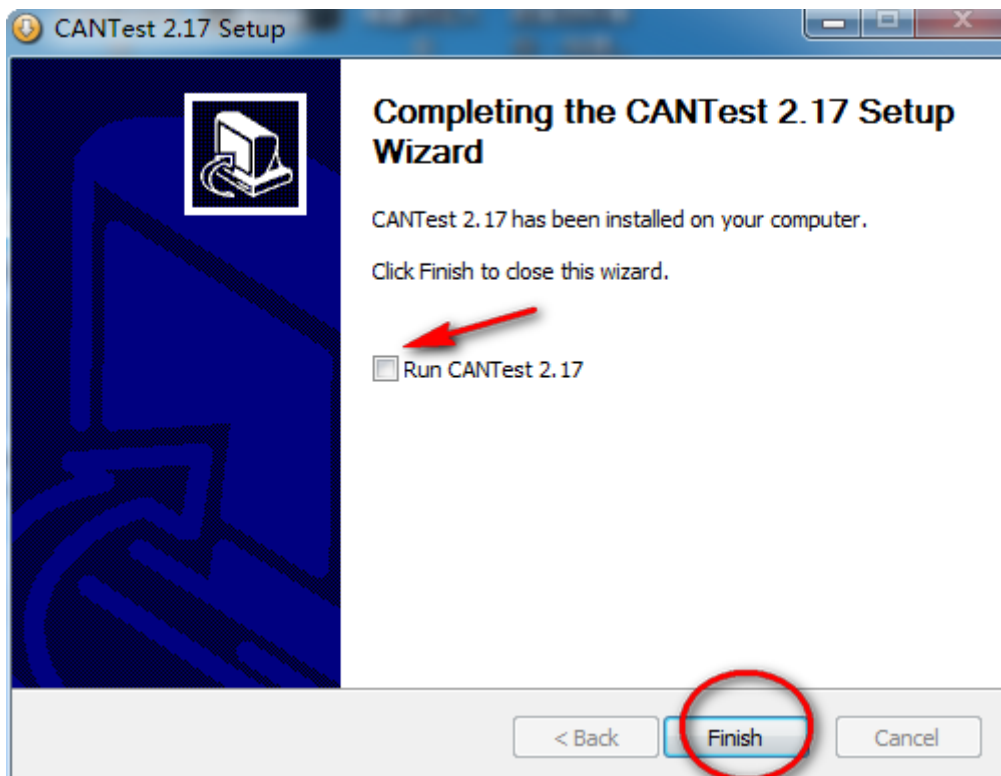
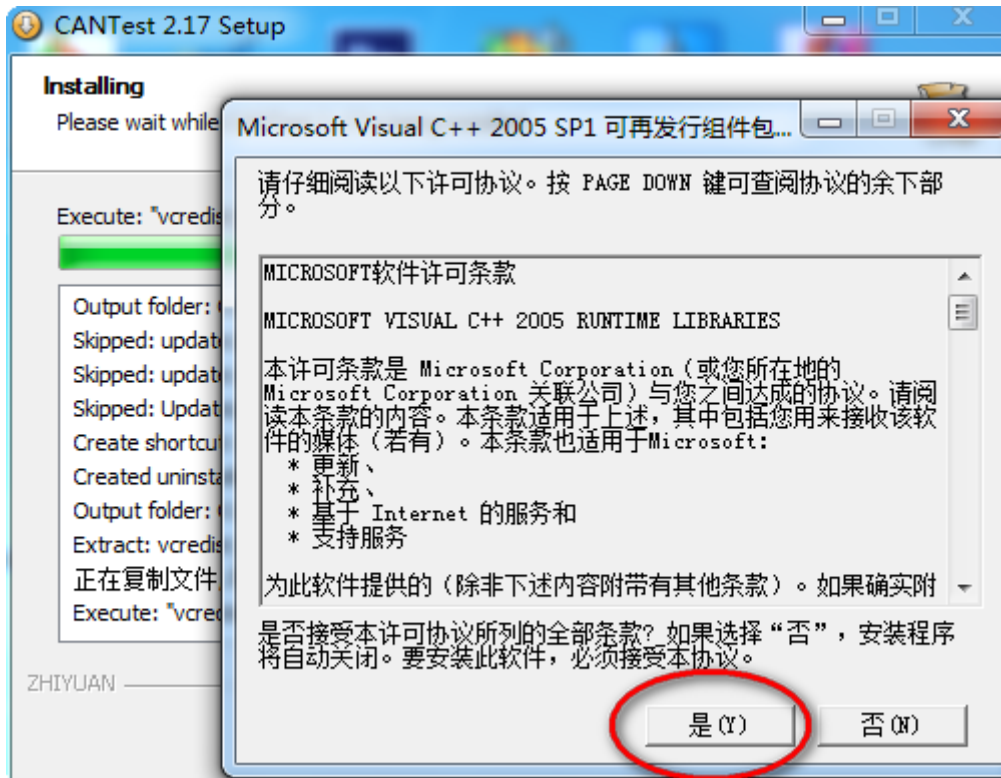
Part One How to Compatible with ZLG **CANTest** Software

1、**“CD\How to use English software\CANTest”**

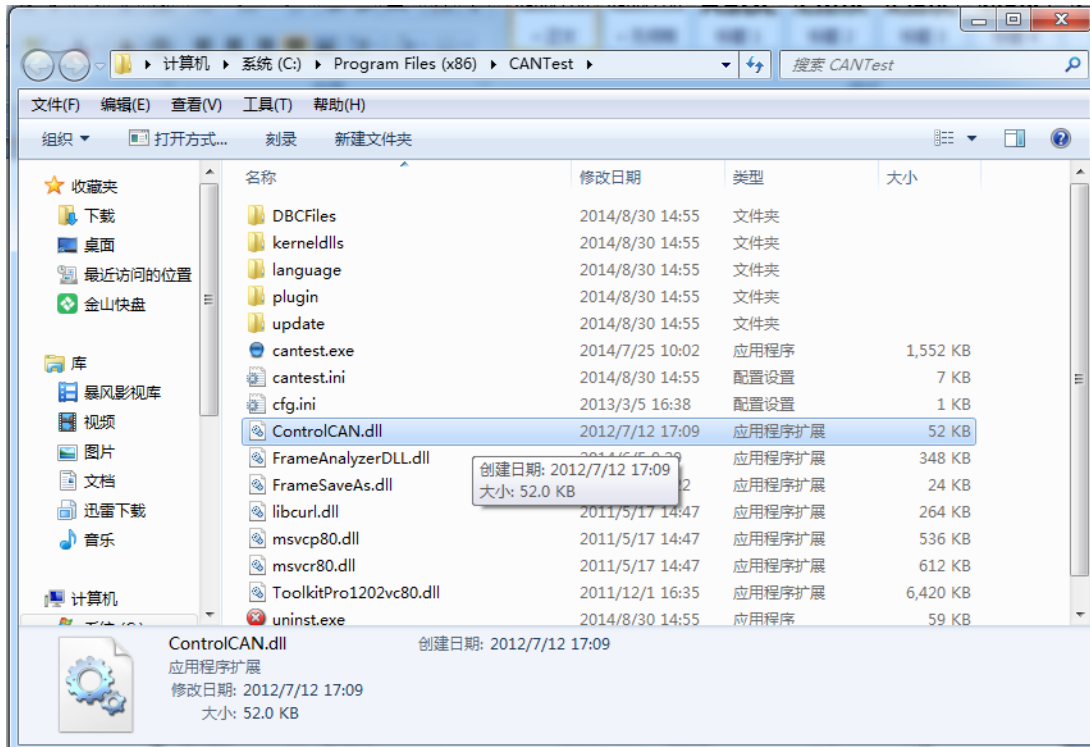
Run **CANTest_Setup.exe** to start the installation.





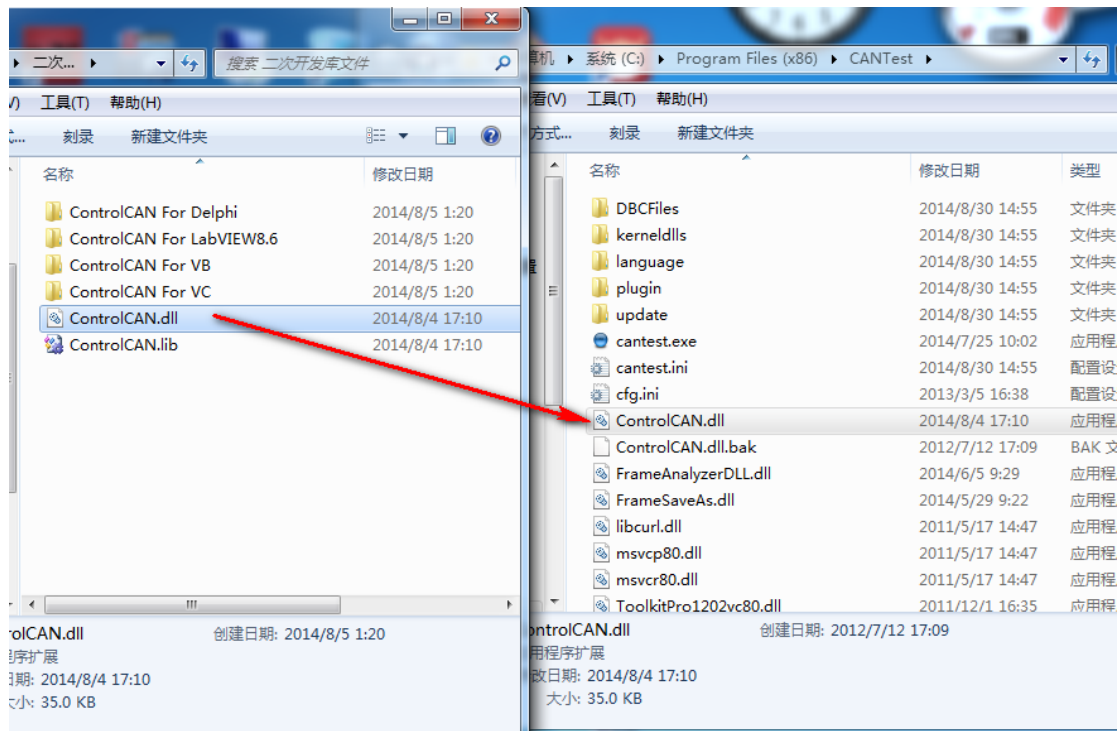


2、change the name of the file in **CANTest** installation directory from "**ControlCAN.dll**" to "**ControlCAN.dll.bak**", as a backup.



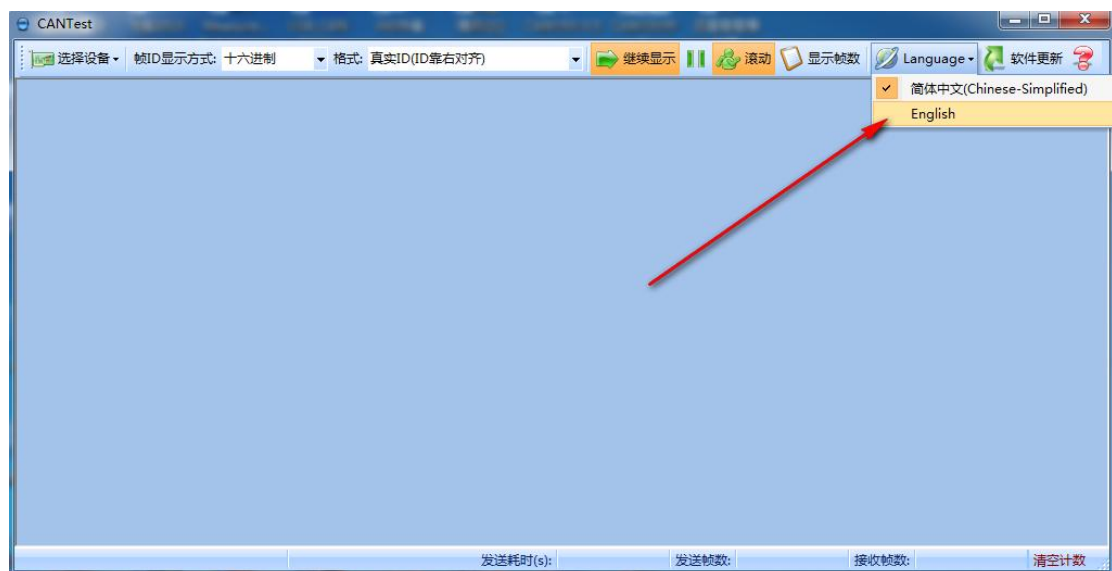
Dll file information of zlg

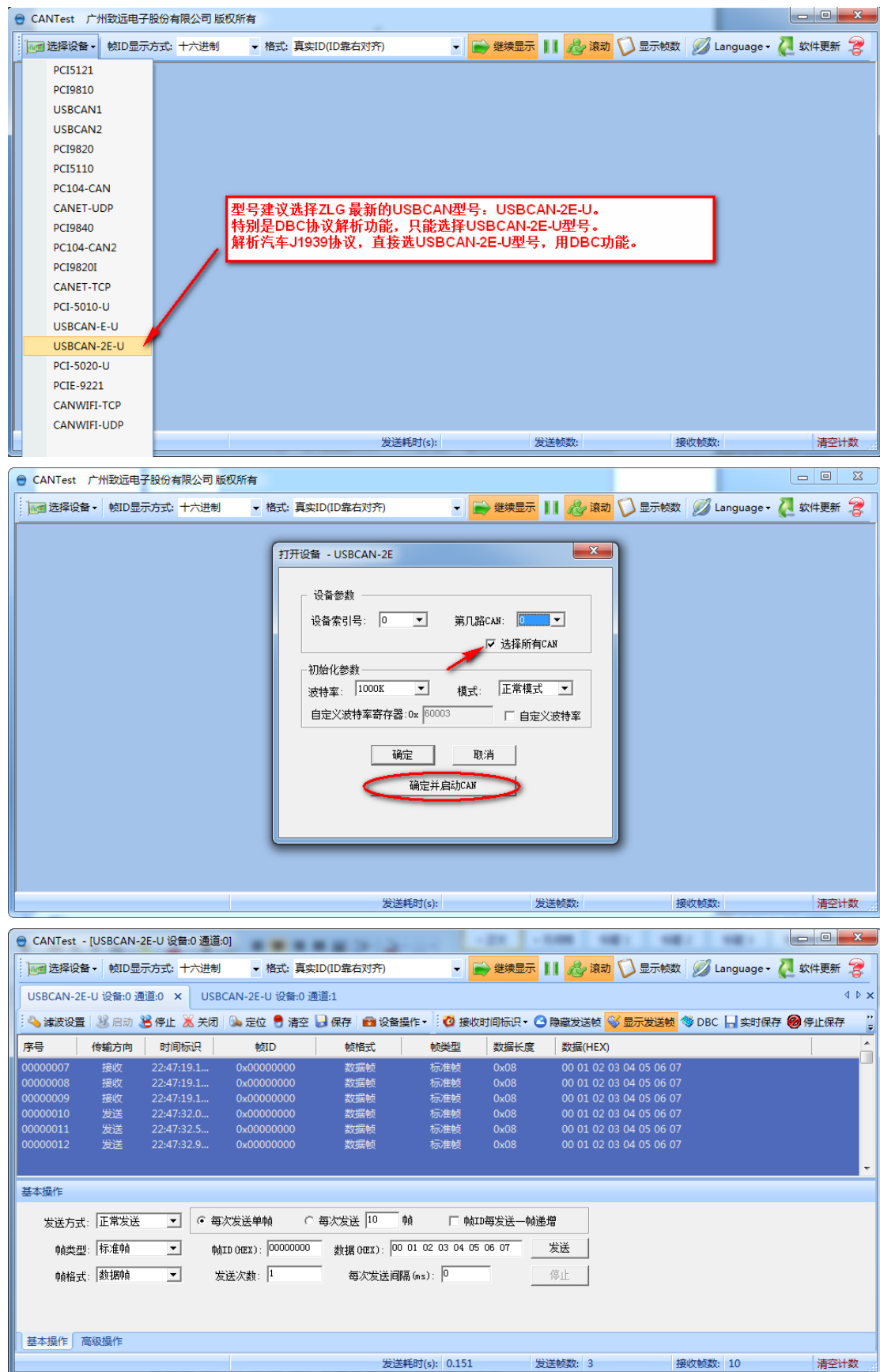
3、copy "**ControlCAN.dll**" file which you can find it in the [secondary development library] file folder in The CD-ROM directory provided by our company, to **CANTest** installation directory.



At this point, you have completed the software installation process.

4、Open and run **CANTest.exe**, after the correct installation of **USB-CAN adapter\CANalyst-II analyzer** driver of our company, operation can be performed by **CANTest** software.





5、 If you need back to use ZLG **USB-CAN adapter\ CANalyst-II analyzer**, you can change the backup file "**ControlCAN.dll.bak**" to "**ControlCAN.dll**" and cover to replace the existing file with the same name.

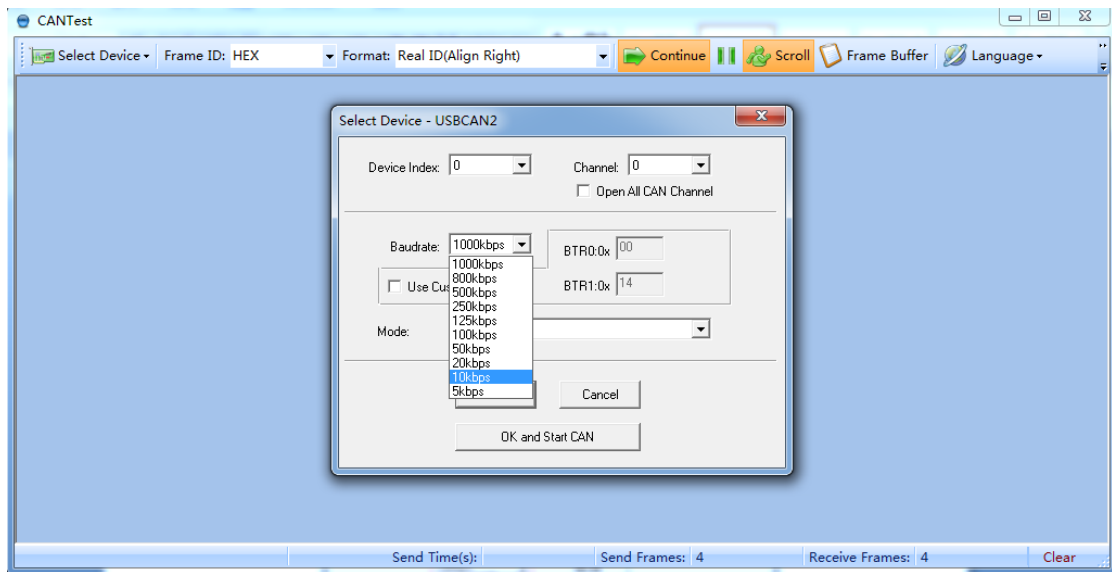
Part Two Functions Not Compatible With ZLG CANTest Software Temporary

As different CAN controllers are used (buy the way, our company use high performance 32 bit microprocessor, focus on product performance and speed, Use our USB-CAN TOOL software can play the best performance of the equipment), when you use ZLG **CANTest** software to operate our **USB-CAN adapter\ CANalyst-II analyzer**, there may be a few functions which can hardly be used cannot compatible with ZLG **CANTest** software temporary, but will not affect the use of normal functions. In order to solve the problem above, our company is working on it very hard; we believe it will become fully compatible through remote upgrade library file in the near future. You can use it if you are accustomed to ZLG **CANTest** software. When use ZLG **CANTest** software to operate our **USB-CAN adapter\ CANalyst-II analyzer**, Compatible part includes: **Baud rate setting**, **Filter settings (partially compatible)**, **Standard Frame \Extern Frame \ Remote Frame \ Data Frame** transmission and reception and so on.

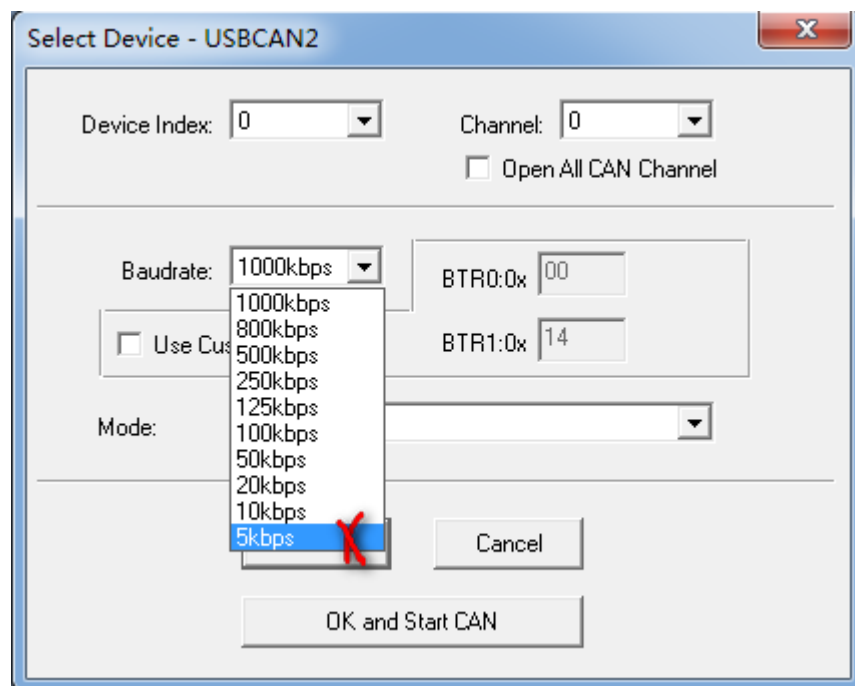
Those temporary incompatible functions include:

1、 when start the software, "Select Device" dialog box, select the baud rate (The baud rate under 10kbps does not support)

when start up ZLG **CANTest** software, "**Select Device**" dialog box filled in initial parameters will pop up ,which has a drop-down list of baud rate, including 10 kinds of common baud rate ranging from 5kbps to 1000kbps and others, As shown in the figure below:



Our **USB-CAN adapter\ CANalyst-II analyzer** does not support the baud rate under 10kbps, so the list 5kbps baud rate parameter is invalid:



Note: if you carry on secondary development based on our **USB-CAN adapter\ CANalyst-II analyzer**, for the use of the interface function as well as the compatibility of ZLG function library, please refer to < Bus Interface Adapter Interface Function Library User Instruction.pdf >