

How to compatible with ZLG **CANPro** Protocol Analysis Software

Instruction Version: V2.03

Version Update Date: 2020.05.01

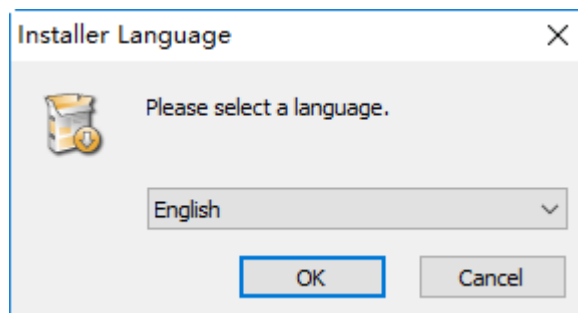
Firstly, thank you for your purchase and use our company's products, we will serve you best!

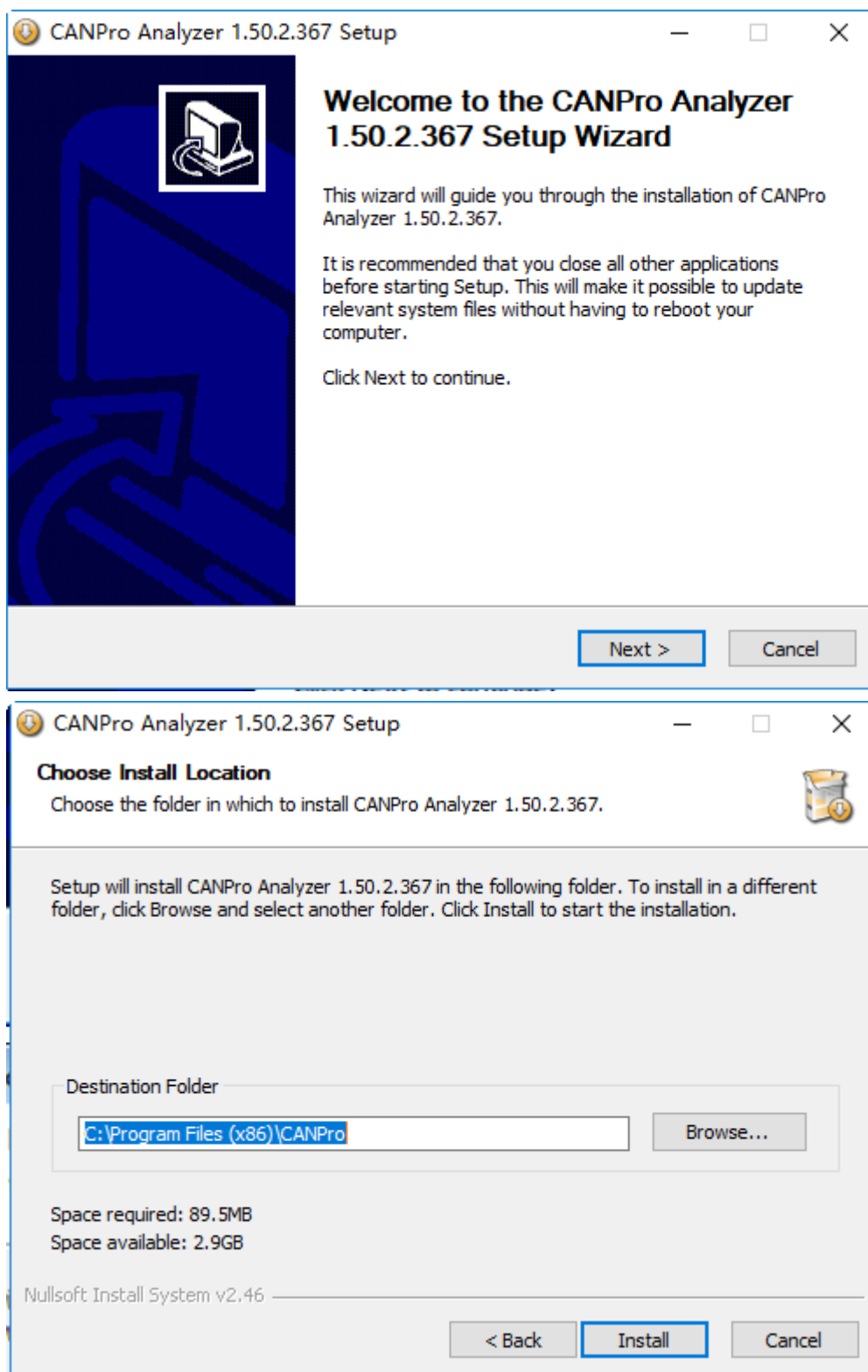
The purpose of this document is to guide our clients for the first time buying and using **CANalyst-II analyzer** to compatible with PC software of ZLG **CANalyst-II analyzer**, namely ZLG **CANPro Protocol Analysis** Software.

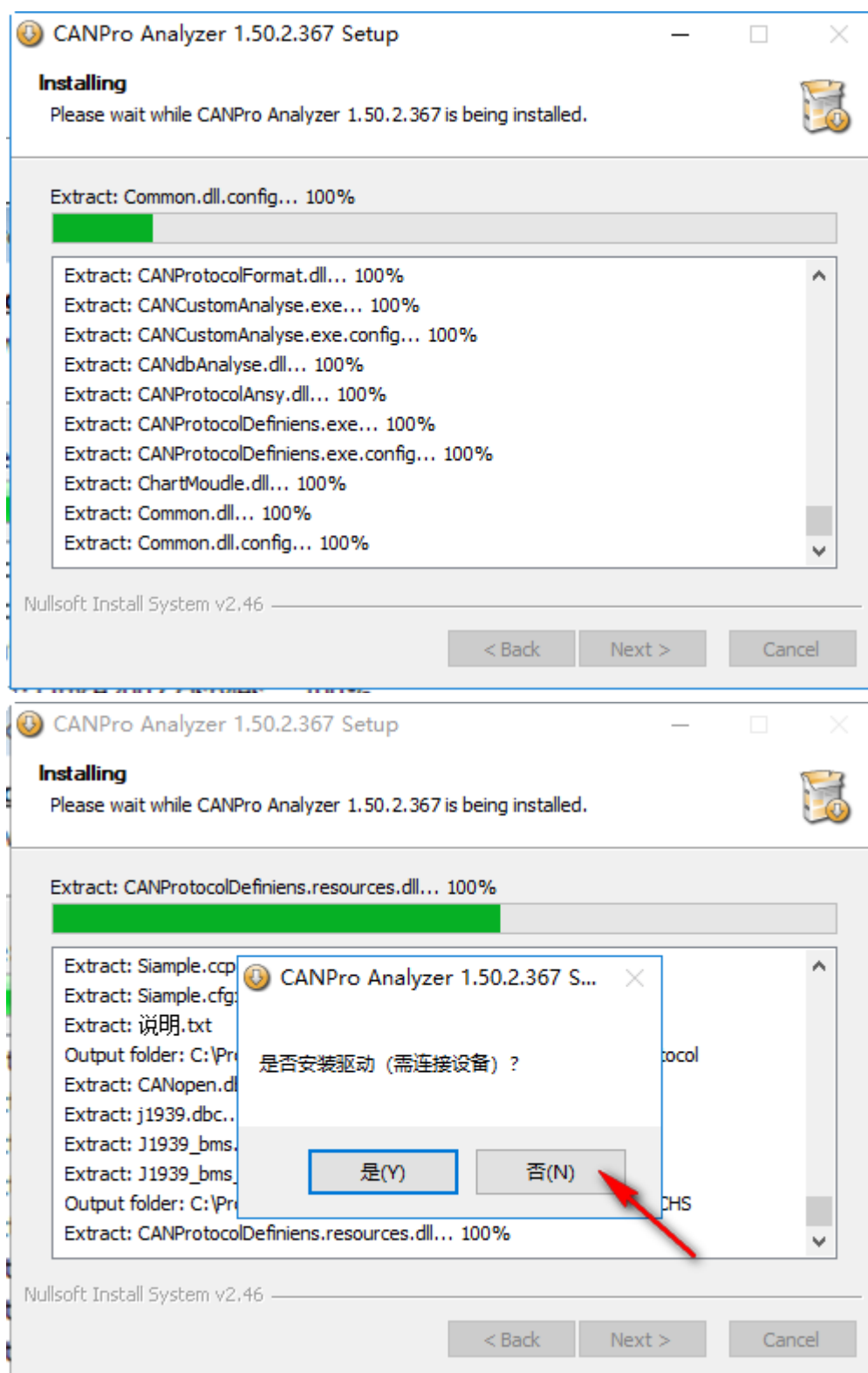
Part One How to Compatible with ZLG CANPro Software

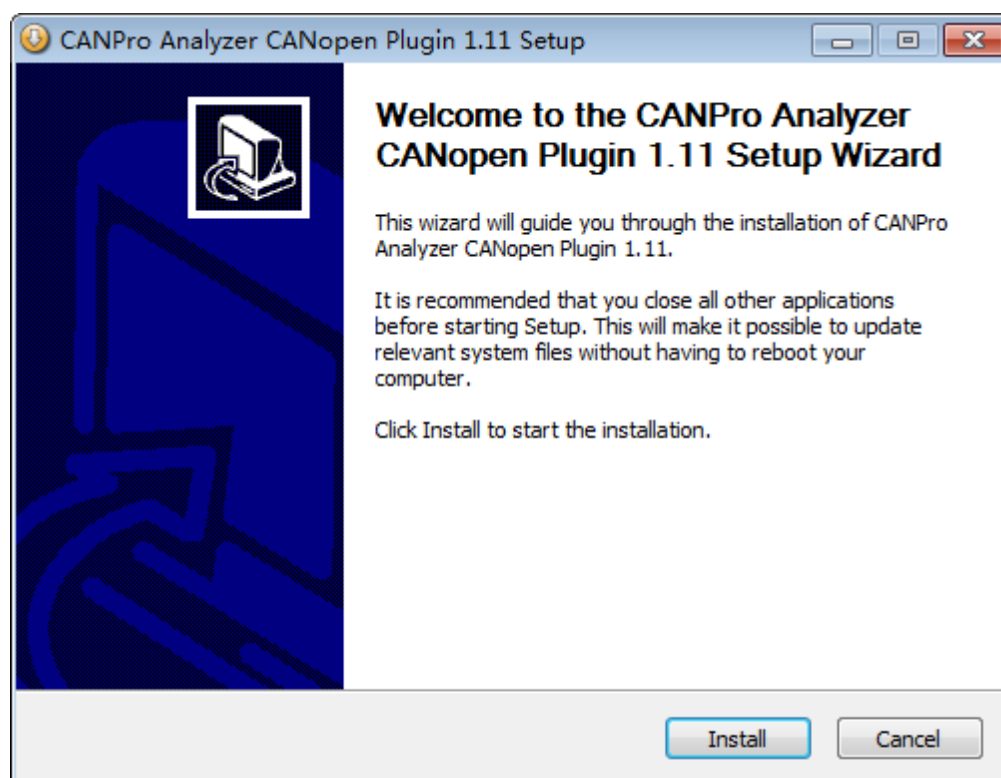
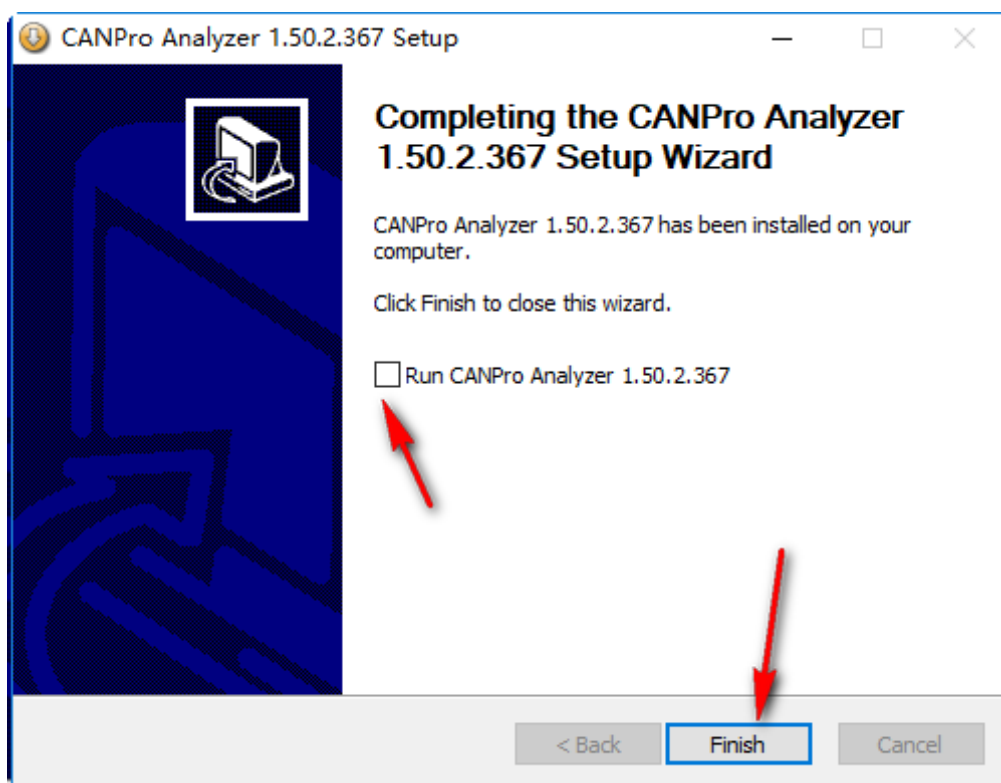
1、 “CD\English materials\ CANPro \CANPro_Setup1.50.2.367.exe”

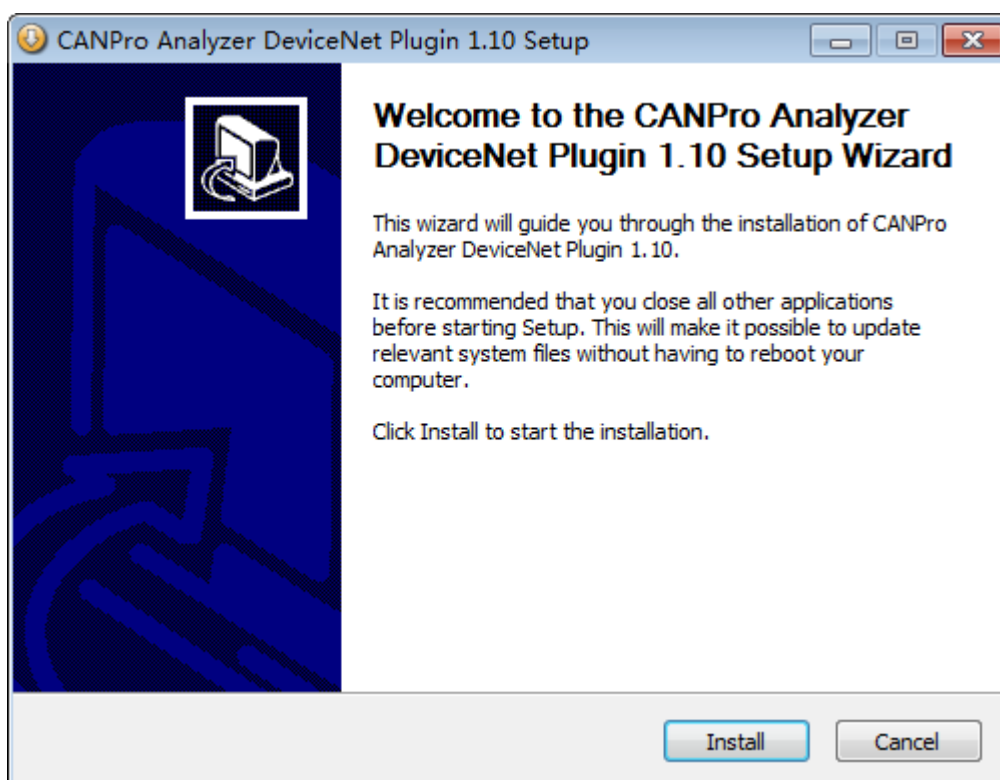
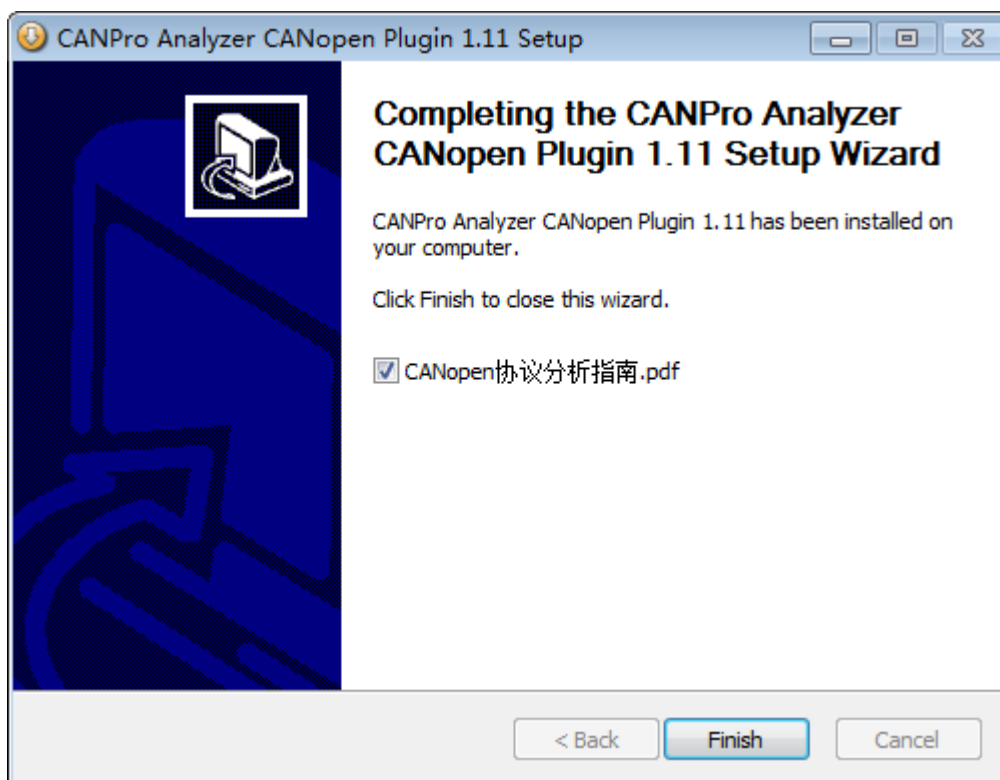
Install **CANPro** main program first, and then install three protocol analysis plug-in installation packages.

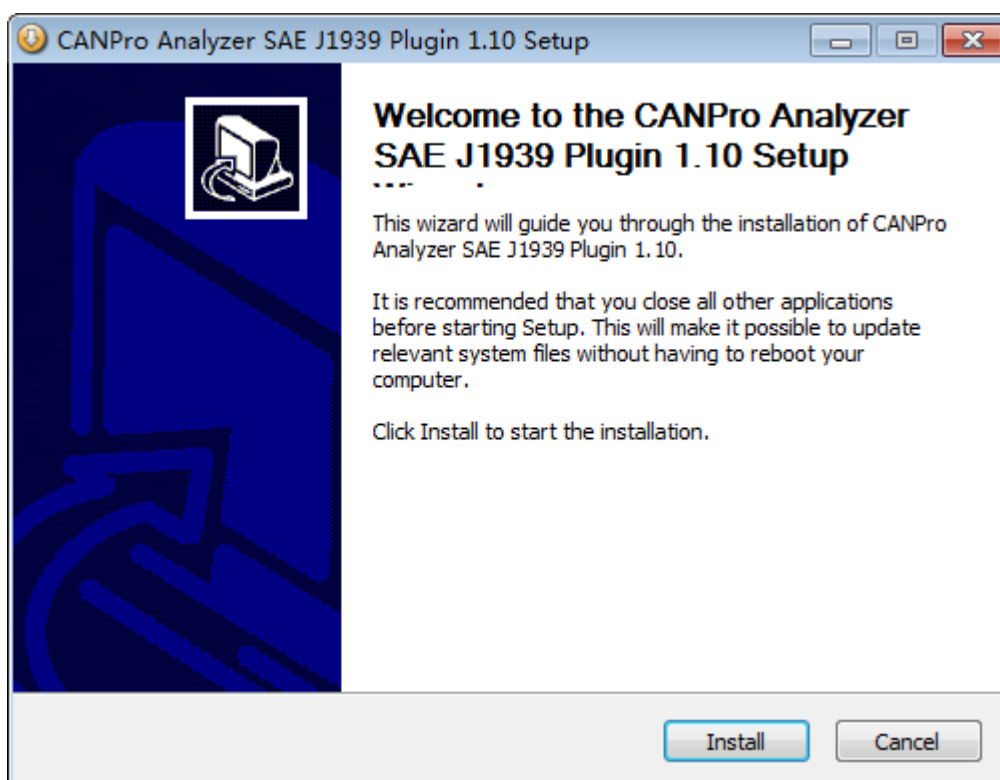
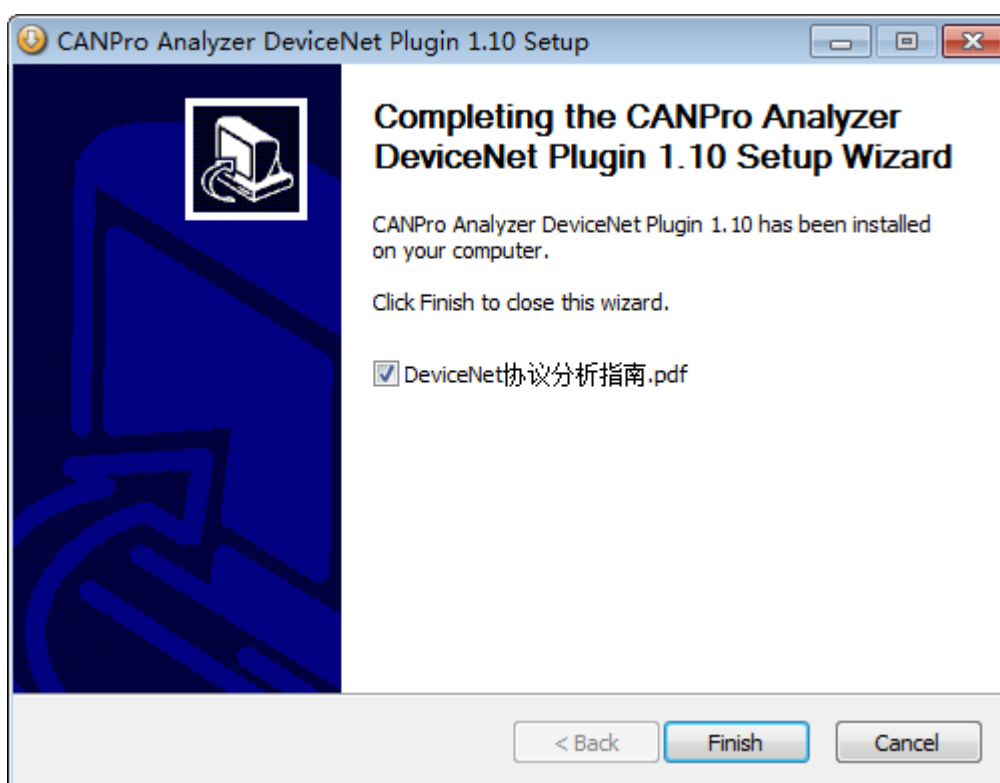


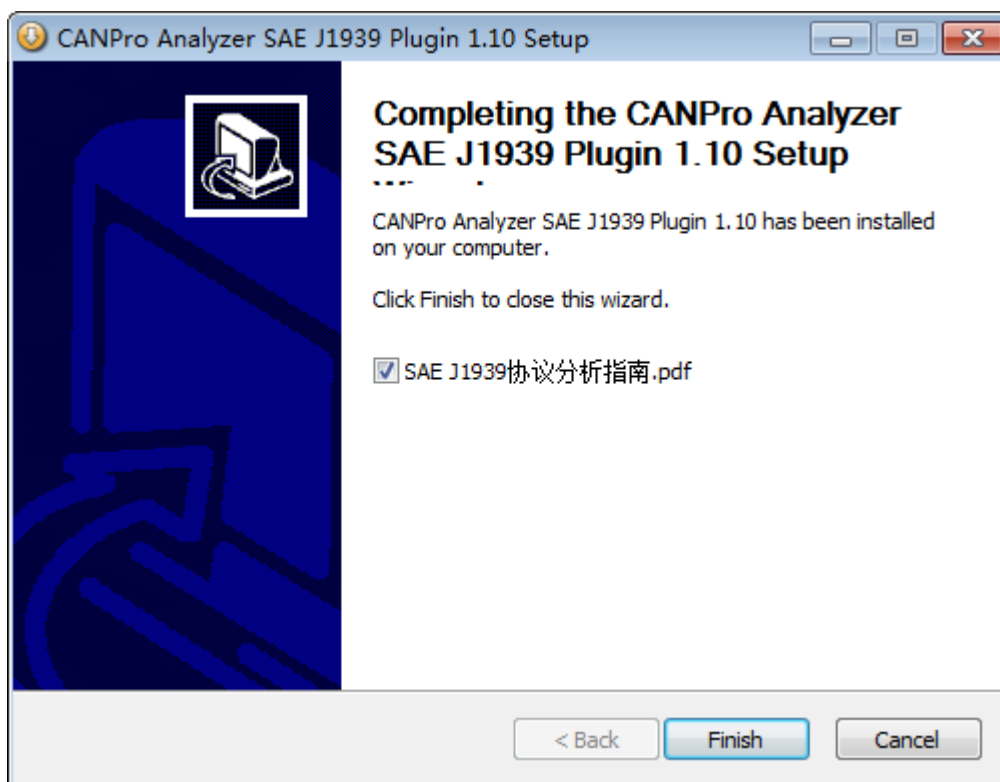




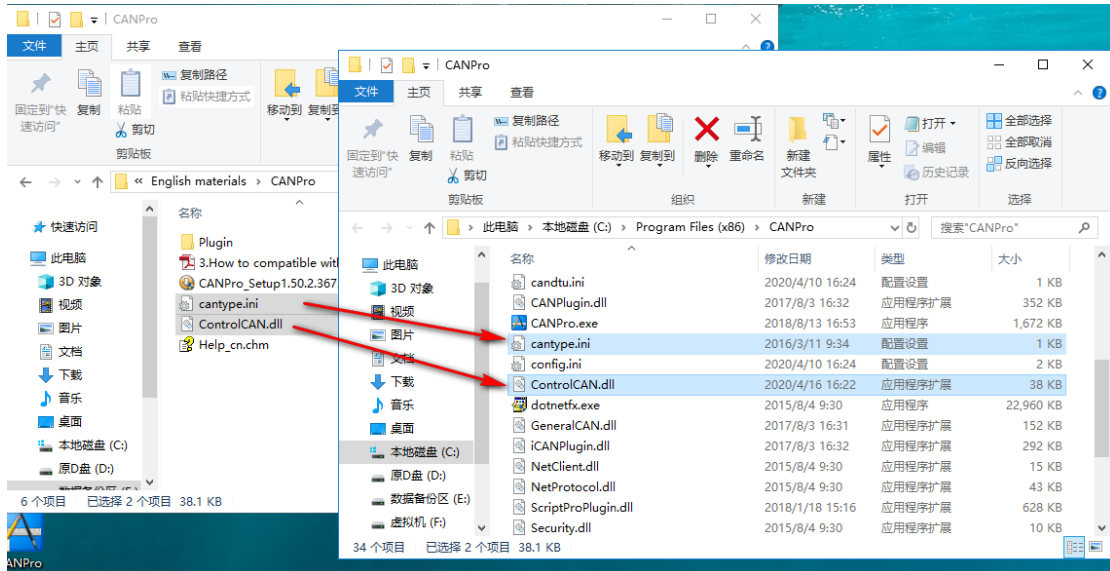






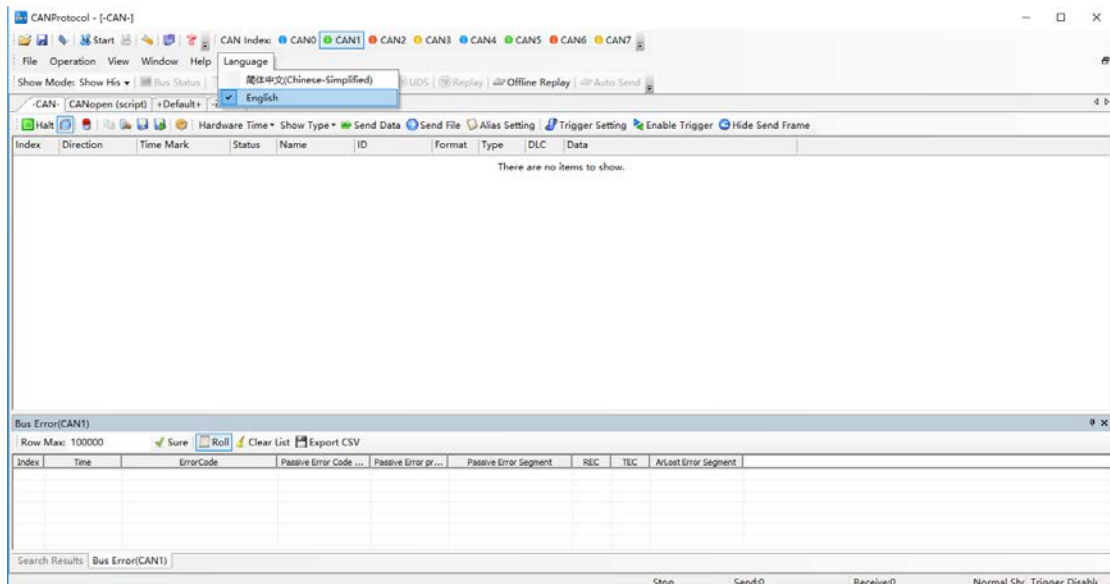


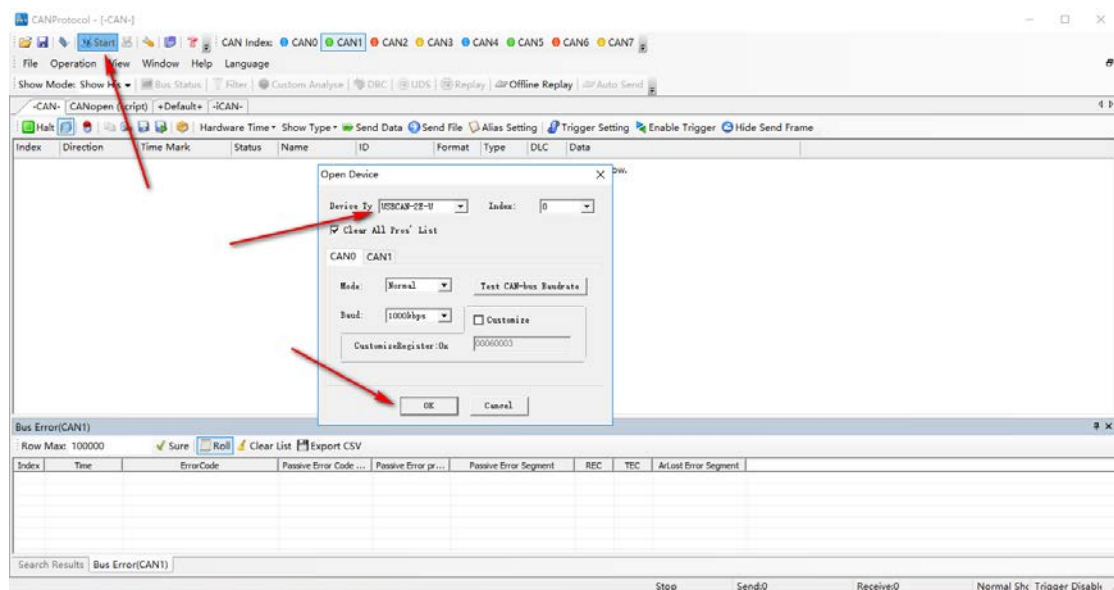
2、copy "**ControlCAN.dll**" and "**cantype.ini**" file which you can find it in the [CD\English materials\CANPro] file folder in The CD-ROM directory provided by our company, to **CANPro** installation directory, Overwrite file with the same name.



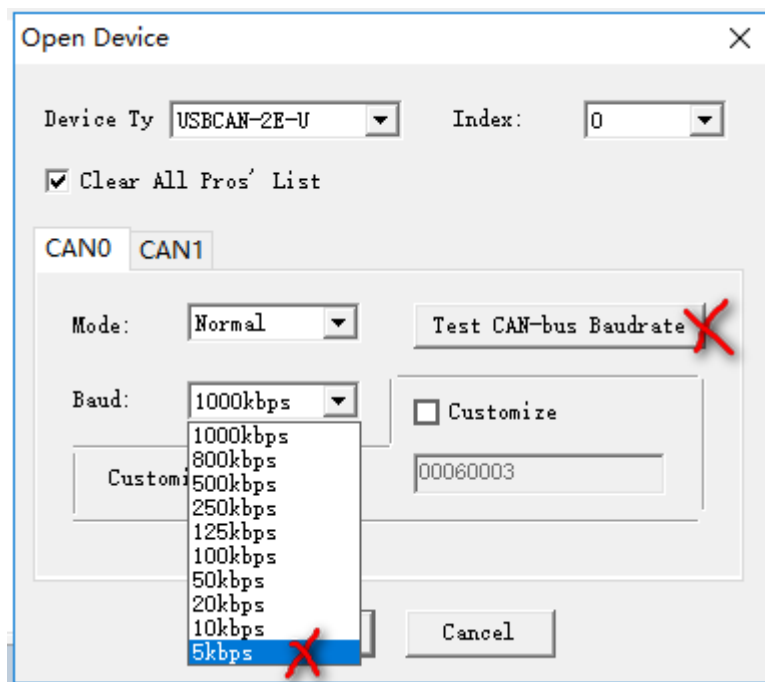
At this point, you have completed the software installation process.

4、Open and run **CANPro.exe**, after the correct installation of **CANalyst-II analyzer** driver of our company, operation can be performed by **CANPro** software.





Note: 5K baud rate is not supported, Test CAN-bus Baudrate is not supported.



3. How to compatible with ZLG CANPro Protocol Analysis Software

